	<h1 style="text-align: center;">Cargo Consolidation</h1> <h2 style="text-align: center;">Policies and Procedures</h2>		Document Number: 2P-OPS-09.05
	Department: F2 Logistics Philippines Inc.-Operations	Effective Date: November 22, 2022	Revision No 1

Scope

This document covers the policies and procedures in extracting data from the F2 Planning System up to loading the cargo to container.

Definition of Terms

FCL – Full Container Load

LCL – Less Container Load

Ownership

The Assistant Operations Manager/Operations Manager/Senior Operations Manager/Operations Head/Assistant Vice President (AVP) – Operations is responsible for ensuring that this document is cascaded to all concerned personnel and that it reflects actual practice.

Objective

To consolidate LCL cargoes into one full container load to save cost.


Policies

1. Ensure proper planning is done to accommodate Full container load or FCL loading.
2. Ensure that FCL is fully maximized.

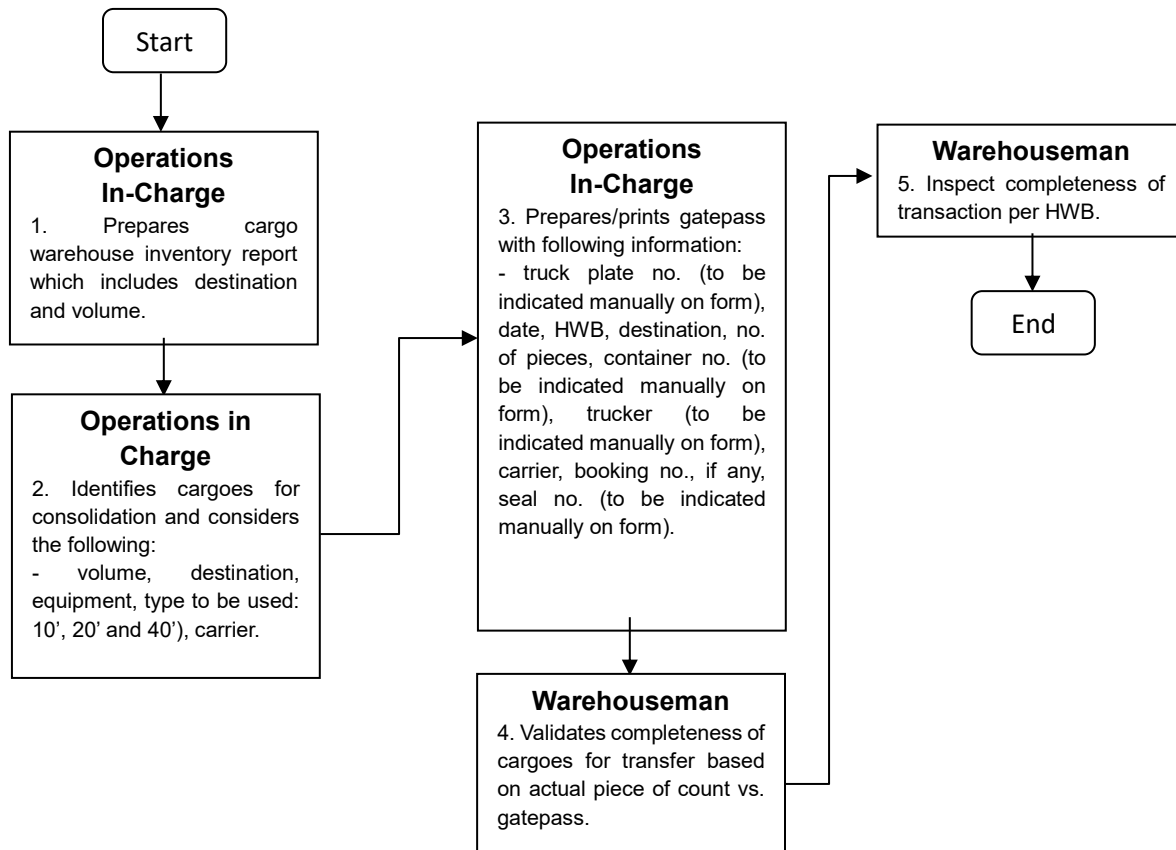
DDC: This Document is already Approved and Posted on Intranet.

Please refer to printed files for signatures of approvers.

Any printed and saved copy of this document is considered uncontrolled

	<h1>Cargo Consolidation</h1> <h2>Policies and Procedures</h2>		Document Number: 2P-OPS-09.05
	Department: F2 Logistics Philippines Inc.-Operations	Effective Date: November 22, 2022	Revision No 1

Procedures



DDC: This Document is already Approved and Posted on Intranet.

Please refer to printed files for signatures of approvers.

Any printed and saved copy of this document is considered uncontrolled