	<h1>Rescue Upon Breakdown</h1> <h2>Policies and Procedures</h2>		Document Number: 2P-SS-04.05
	Department: Fleet Management	Effective Date: November 16, 2022	Revision No 3

Scope

This document covers the rescue of equipment upon breakdown due to equipment failure (wear and tear of parts, etc.).

Ownership

The Fleet Management Manager is responsible for ensuring that this document is cascaded to all concerned personnel and that it reflects actual practice.


Policies

1. In cases of equipment breakdown, the driver shall immediately inform the Business Unit's Operations Supervisor or Manager, who shall then relay the message via SMS/call/Viber to Fleet Supervisor or Manager.
2. The repair tools intended for rescue shall always be inside the rescue vehicle.

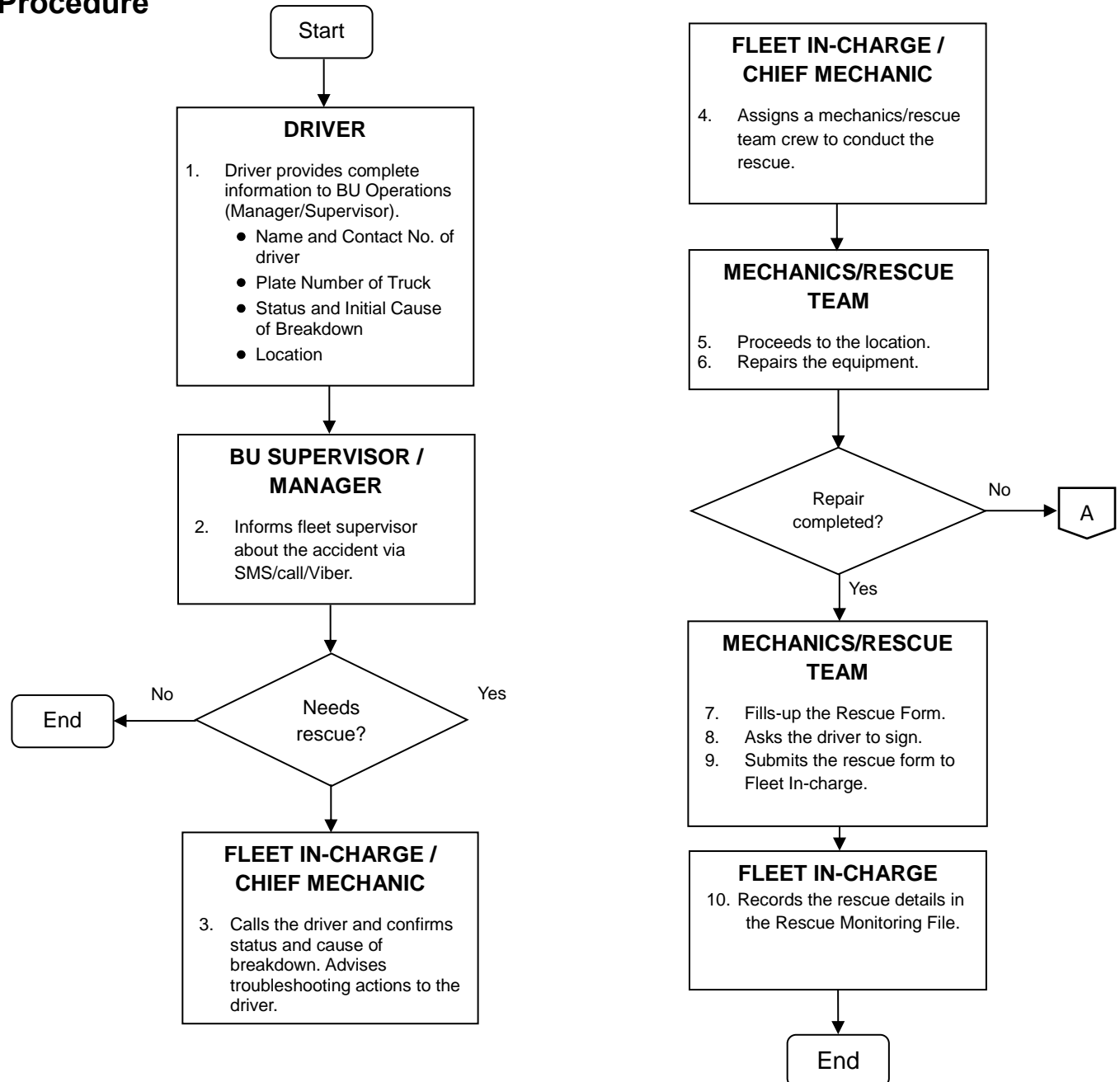
DDC: This Document is already Approved and Posted on Intranet.

Please refer to printed files for signatures of approvers.

Any printed and saved copy of this document is considered uncontrolled

	<h1>Rescue Upon Breakdown</h1> <h2>Policies and Procedures</h2>		Document Number: 2P-SS-04.05
	Department: Fleet Management	Effective Date: November 16, 2022	Revision No 3


Procedure

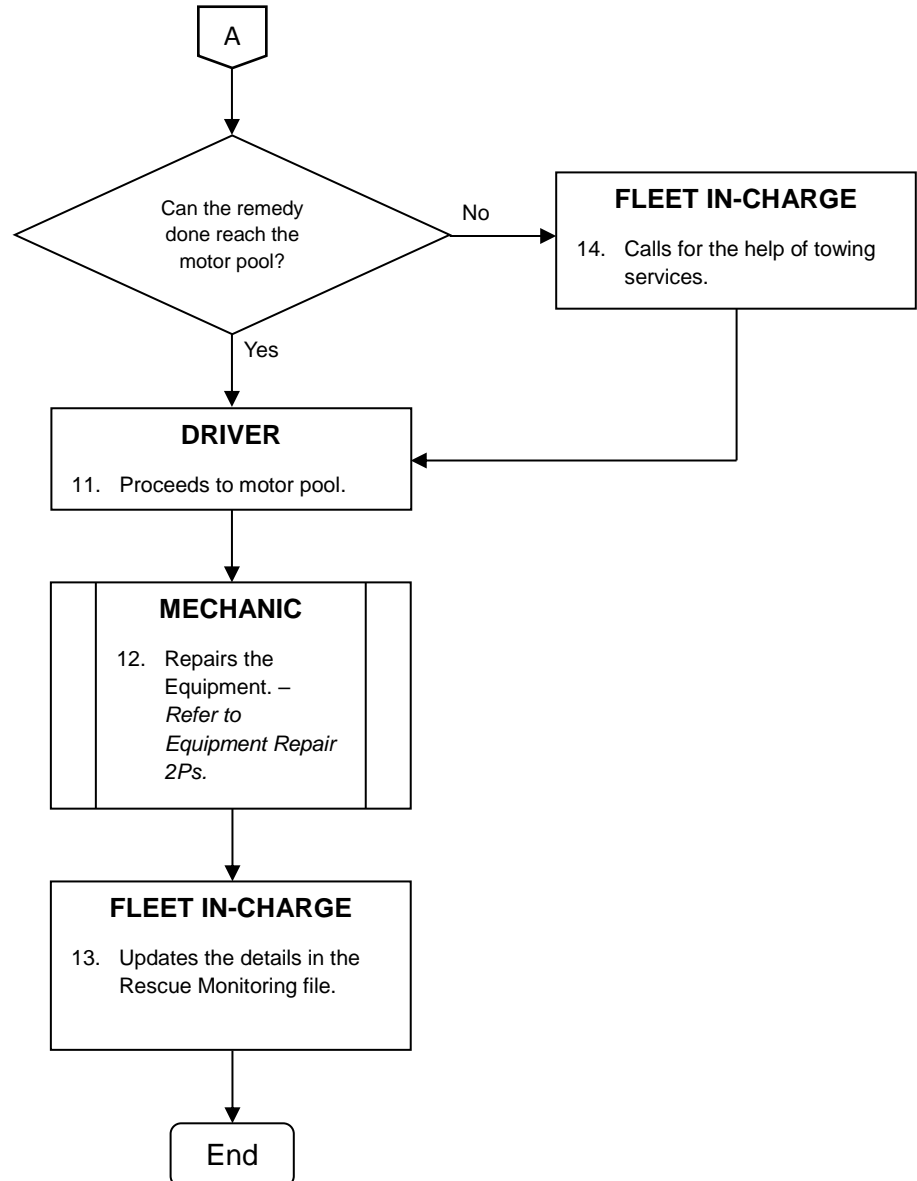


DDC: This Document is already Approved and Posted on Intranet.

Please refer to printed files for signatures of approvers.

Any printed and saved copy of this document is considered uncontrolled

	<h1>Rescue Upon Breakdown</h1> <h2>Policies and Procedures</h2>		Document Number: 2P-SS-04.05
	Department: Fleet Management	Effective Date: November 16, 2022	Revision No 3



DDC: This Document is already Approved and Posted on Intranet.

Please refer to printed files for signatures of approvers.

Any printed and saved copy of this document is considered uncontrolled