



F2 LOGISTICS
LET'S MOVE. NOW.

10
F2 LOGISTICS
YEARS



iSERVE

BUSINESS SOLUTIONS

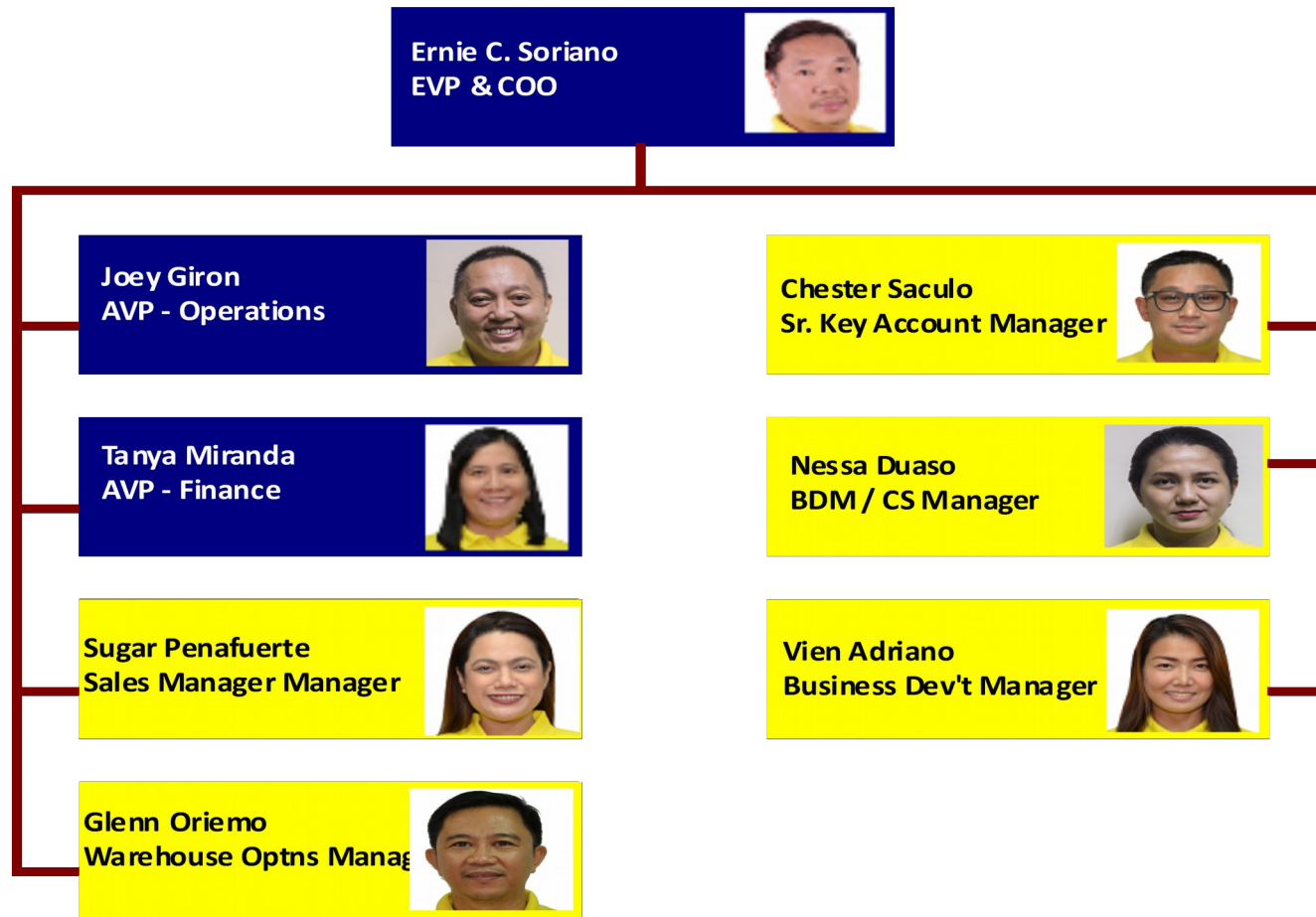
Org Chart

as May 31, 2017



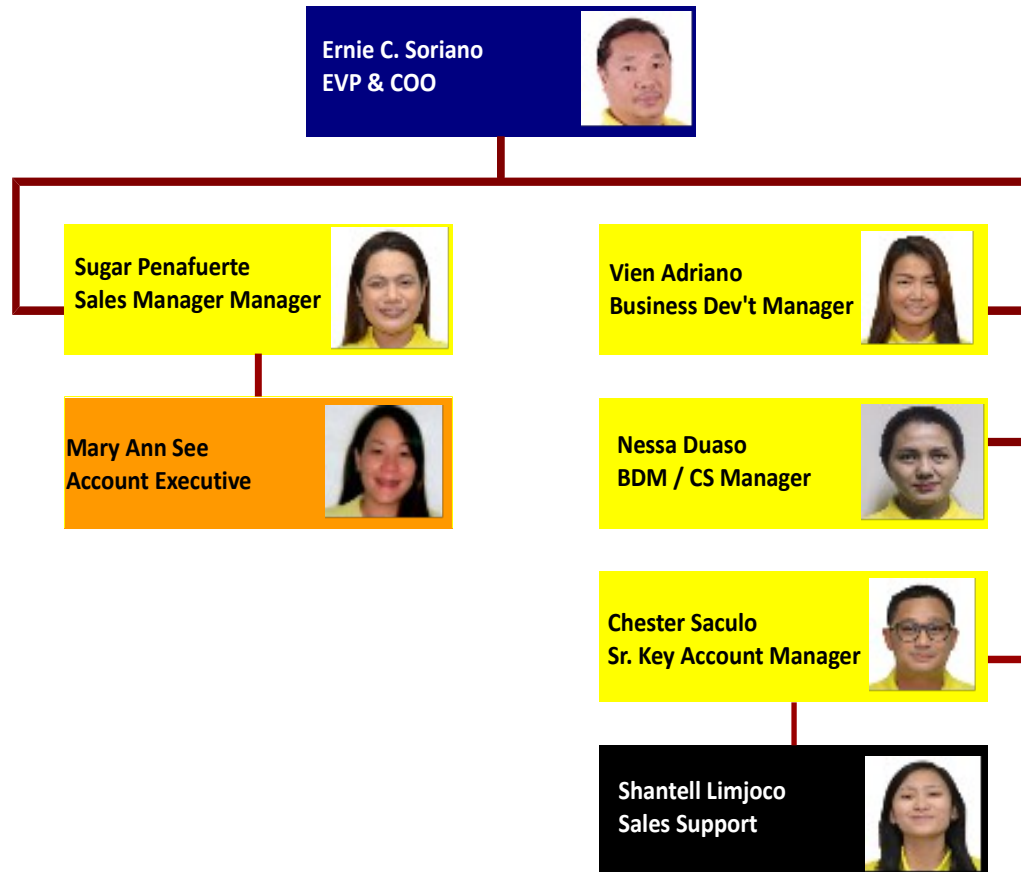
As of May 31, 2017

Summary	Officer	3
	MGR	5
	TOTAL	8



As of May 31, 2017

Summary	Officer	1
	MGR	4
	SUP	1
	TM	1
	TOTAL	7



As of May 31, 2017

Ranessa Anne M. Duaso
 BDM/
 Customer Service Manager



Summary

MGR	1
SUP	1
TM	8
Inorg	1
TOTAL	11

Mary Joy A. Tanyag

Customer Service
Representative -Unilab



Remy Anne L. Sarte
 Customer Service
Supervisor-Consumer



Maricris D. Mira

Customer Service
Support



**Merry Krisma R.
Rambacal**
 Customer Service
Representative-Unilab



**Beverly D. De
Chavez**

Customer Service
Representative



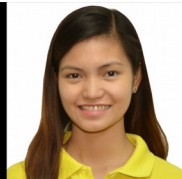
**Alain Gillian V.
Barlaan**

Customer Service
Representative



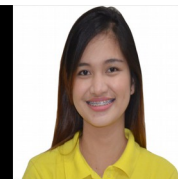
Rinacile P. Rocha

Customer Service
Representative -Unilab



**Clarisse Ann S.
Chico**

Customer Service
Representative



**Mary Grace A.
Mendoza**

Customer Service
Representative -Unilab



**Natasha Nadine M.
Santos**

Customer Service
Representative



As of May 31, 2017

Joey V. Giron
AVP - Operations



Ryan Pulusan
Asst Optns Manager



Aris Penawin
Operations Assistant



Cris Santos
Operations Assistant



Marlon Doculan
Account Coordinator



Port Rep – Air (1)

Operations Assistant - (1)

Encoder - (3)

Warehouseman - (6)

Argel Granito
Operations Supervisor



Novie Cabales
Port Rep - Sea



Giovannie Lopez
Port Rep - Sea

Drivers - (11)

Checker - (3)

Account Coordinator - (1)

Eric Alfonso
Operations Supervisor
(Unilab)



Boyet Mercado
Operations Supervisor
(Unilab)



Summary

Officer	1
MGR	1
SUP	3
TM	4
Inorg	27
TOTAL	36

Checker (7)



As of May 31, 2017

Summary

Officer	1
MGR	1
SUP	1
TM	8
Inorg	1
TOTAL	12

Tanya Miranda
AVP - Finance



Roilan Roperez
C & C Manager



Toni Canama
Finance Supervisor



Dina Ligon
Billing Assistant



Jem Duco
Billing Assistant



Ruth Rico
Billing Assistant



Jovelyn Romualdo
Billing Assistant



Vacant
Billing Assistant

Raymond Delgado
Finance Liaison



Frank Gonzaga
Documentation Asst



Jeleen Dela Cruz
Documentation Assistant





F2 LOGISTICS
LET'S MOVE. NOW.

VISION

We will be the **partner of choice**
for **world class** supply chain solutions

OUR MISSION

We exist to **provide**

Flexible, customized supply chain solutions

Fun-filled and excellence - driven work environment for our team members

Fruitful relationship with our partners

Financially rewarding investment for our shareholders

iSERVE

Domestic • International • Land Transport • Cold Chain • Customs Brokerage
ISO Tank • Project Cargo • Warehousing • Contract Logistics

SUPPLY CHAIN (02) 328 2332 • BUSINESS SOLUTIONS (02) 826 0590

VALUE CHAIN (02) 553 5632 • F2 GLOBAL (02) 826 3216

www.f2logistics.com