



F2 LOGISTICS
LET'S MOVE. NOW.

10
F2 LOGISTICS
YEARS



iSERVE

F2 Davao Org Chart

ao June 30, 2018



As of June 30, 2018

Summary	Officer	2
	Manager	2
	Supervisor	3
	Staff	1
	TOTAL	8

Jong R. Manulid
 VP – Mindanao



Dong Ruelo
 Sr. Operations Manager



Glenn Oriemo
 Warehouse Manager



Nanette Sayman
 Area Finance Supervisor



Hazel Dagaoles
 Sales Support

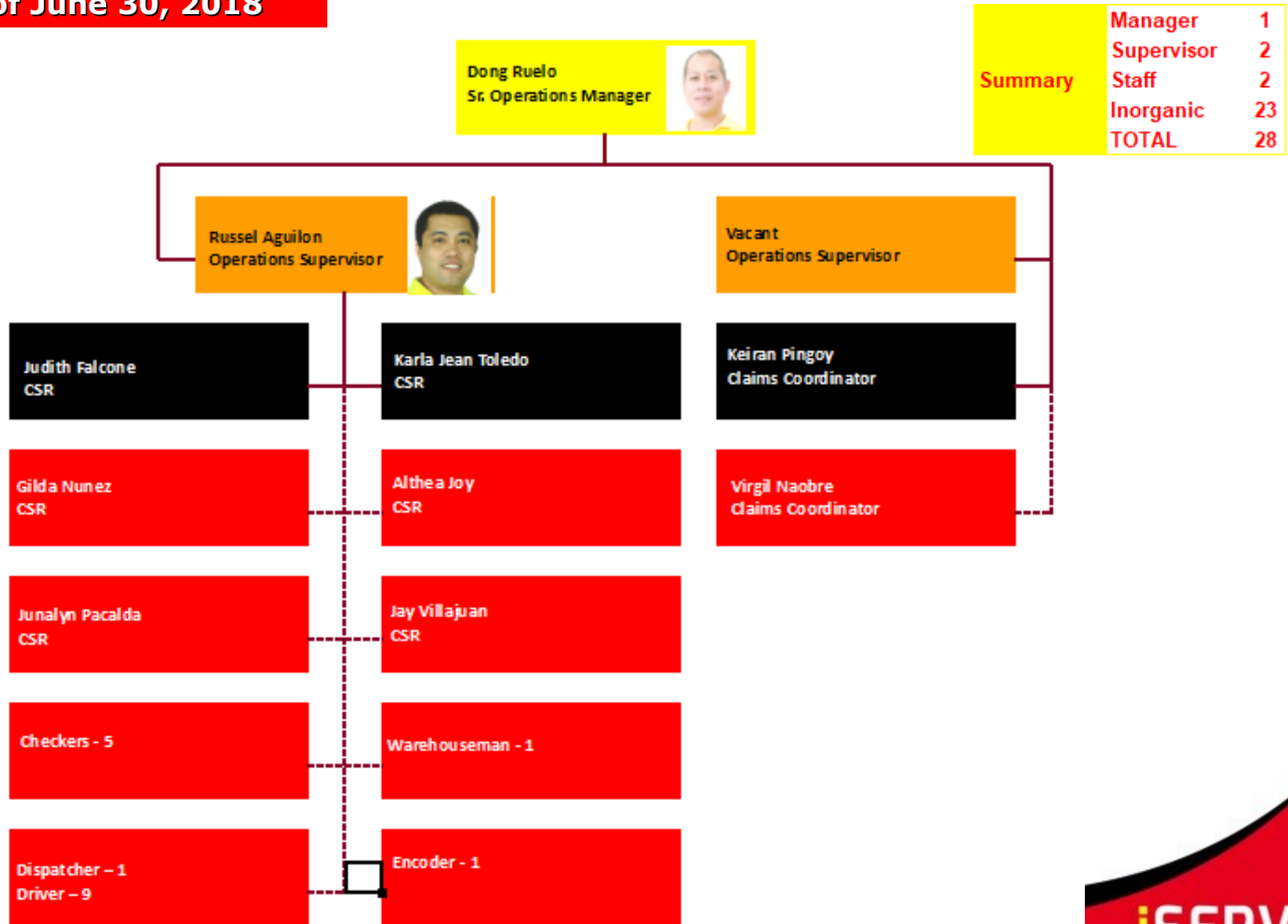


Vacant - 2
 Management Trainees

Mikko Salcedo
 HR Coordinator



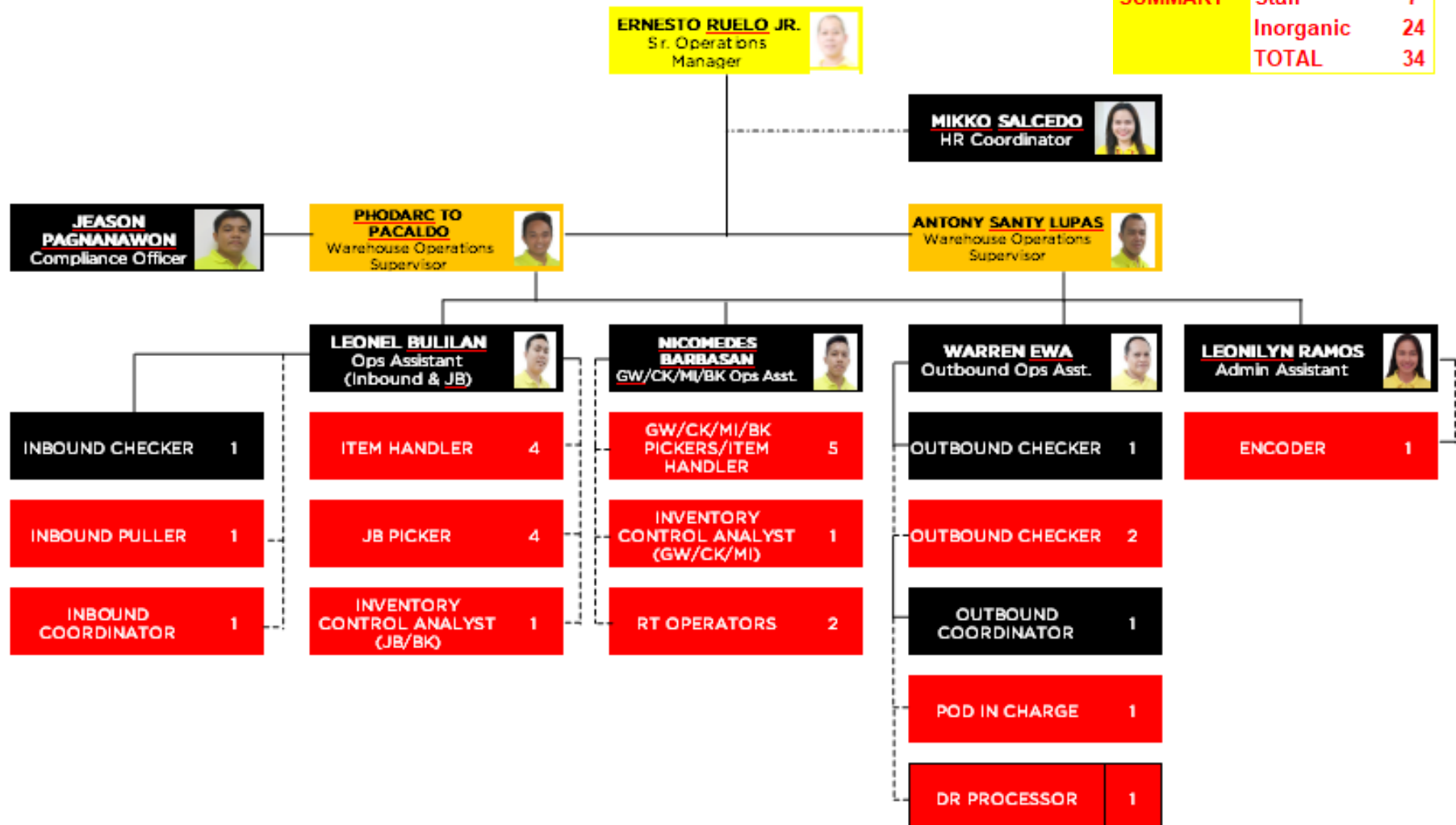
As of June 30, 2018



As of June 30, 2018

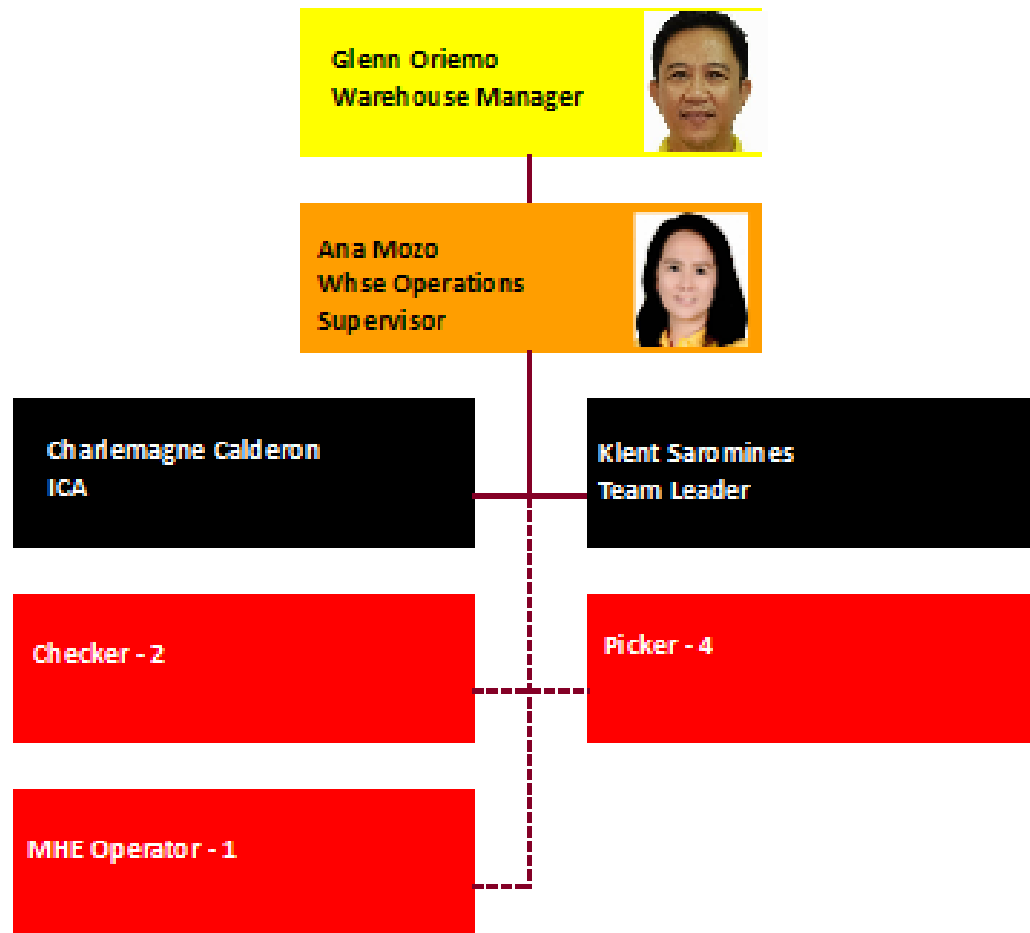
SUMMARY

Manager	1
Supervisor	2
Staff	7
Inorganic	24
TOTAL	34



As of June 30, 2018

Summary	Manager	1
	Supervisor	1
	Staff	2
	Inorganic	7
	TOTAL	11



As of June 30, 2018

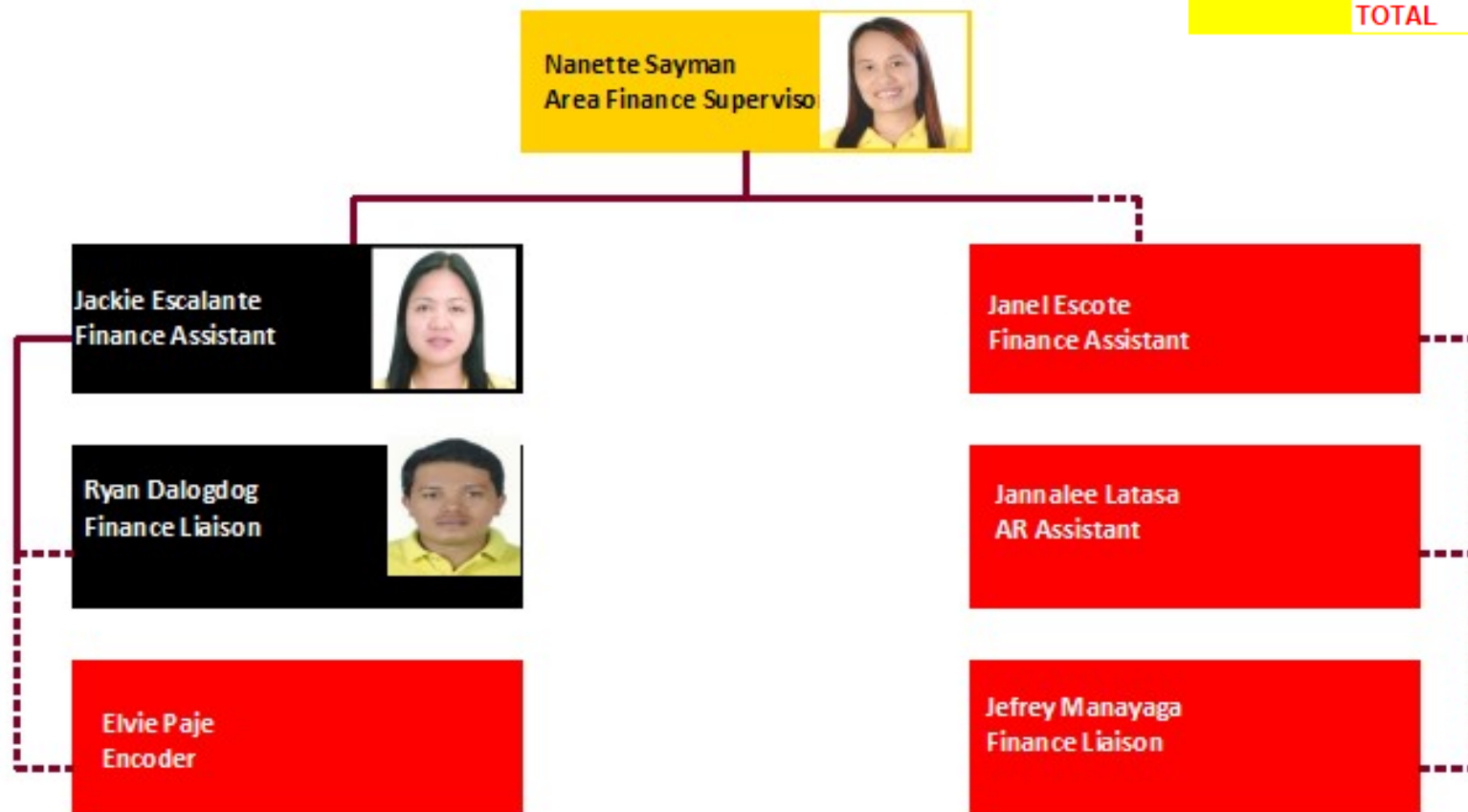
Summary	Manager	1
	Staff	1
	Inorganic	1
	TOTAL	3



As of June 30, 2018

Summary

Supervisor	1
Staff	2
Inorganic	4
TOTAL	7





F2 LOGISTICS
LET'S MOVE. NOW.

VISION

We will be the **partner of choice**
for **world class** supply chain solutions

OUR MISSION

We exist to **provide**

Flexible, customized supply chain solutions

Fun-filled and excellence - driven work environment for our team members

Fruitful relationship with our partners

Financially rewarding investment for our shareholders

iSERVE

Domestic • International • Land Transport • Cold Chain • Customs Brokerage
ISO Tank • Project Cargo • Warehousing • Contract Logistics

SUPPLY CHAIN (02) 328 2332 • BUSINESS SOLUTIONS (02) 826 0590

VALUE CHAIN (02) 553 5632 • F2 GLOBAL (02) 826 3216

www.f2logistics.com