



F2 GLOBAL LOGISTICS

LET'S MOVE. NOW.



iSERVE



F2 GLOBAL LOGISTICS
LET'S MOVE. NOW.

ORGANIZATIONAL CHART

North Luzon

01 March 2021

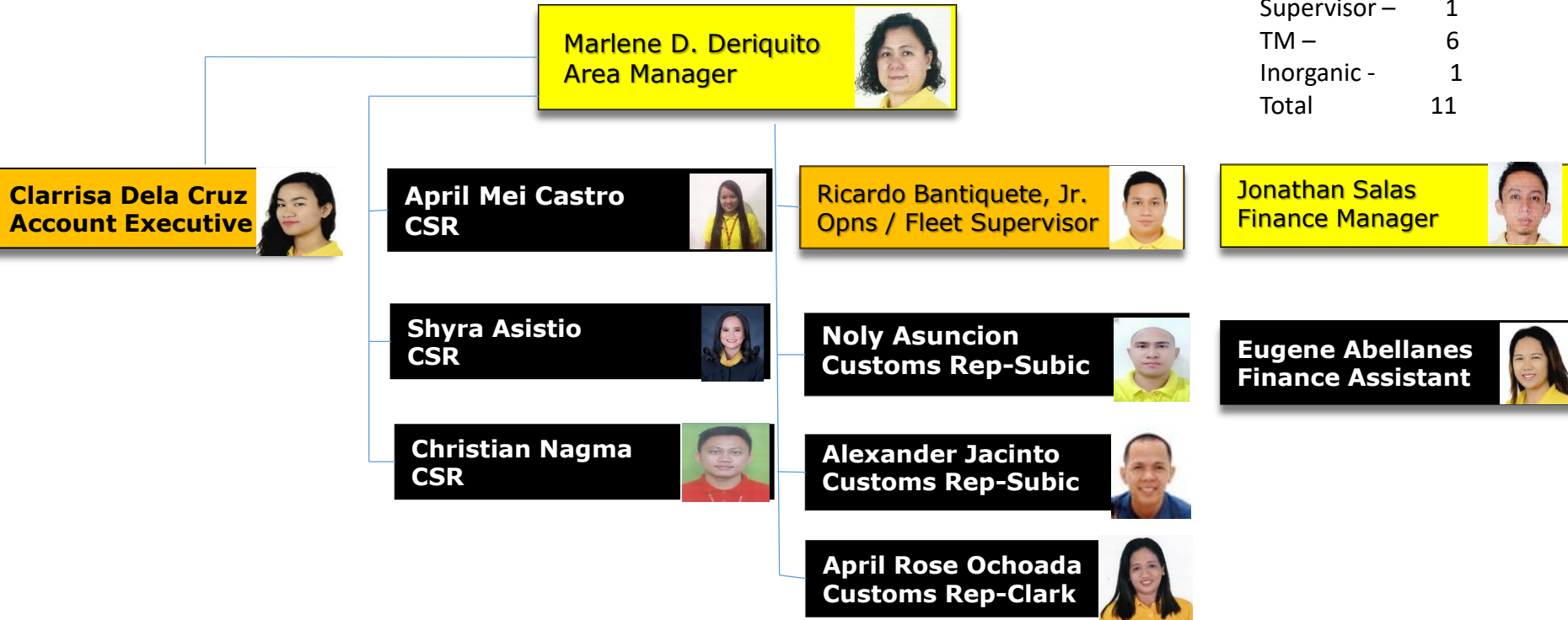


iSERVE

As of 01 March 2021

Summary:

Manager –	2
Sales -	1
Supervisor –	1
TM –	6
Inorganic -	1
Total	11



VISION

We will be the **partner of choice** for **world class** supply chain solutions

OUR MISSION

We exist to **provide**

Flexible, customized supply chain solutions

Fun-filled and excellence - driven work environment for our team members

Fruitful relationship with our partners

Financially rewarding investment for our shareholders

QUALITY POLICY

We at **F2** Logistics Philippines, Inc. and **F2** Global Logistics Inc. are committed to be the **PARTNER OF CHOICE** by providing customized supply chain solutions to our customers.

We maintain good relationships with our customers by:

1. Giving the highest quality service that is measured through performance standards
2. Complying to customer, statutory and regulatory requirements, and
3. Constantly improving our quality management system that will enable the company to exceed expectations

iSERVE

Domestic • International • Land Transportation • Cold Chain • Customs Brokerage
ISO Tank • Project Cargo • Warehousing • Contract Logistics

SUPPLY CHAIN (02) 328 2332 • BUSINESS SOLUTIONS (02) 826 0590

VALUE CHAIN (02) 553 5632 • F2 GLOBAL (02) 826 3216

WWW.F2LOGISTICS.COM



F2 GLOBAL LOGISTICS
LET'S MOVE. NOW.