



# **F2 GLOBAL LOGISTICS**

LET'S MOVE. NOW.



**iSERVE**

# ORGANIZATIONAL CHART (MNL)





**As of August 31, 2018**

**Delia M. Pantas**  
VP & COO



**Summary**

Officer	2
MGR	5
SUP	2
TOTAL	9

**Vangie Manzano**  
AVP - Finance



**Marlene Deriquito**  
Area Manger – North  
Luzon



**Manette Misajon –**  
Area Manager VisMin



**Arley Gregorio**  
Sales Manager



**Mildred Garcia**  
Customer Service Mgr



**Gerlie Cantil**  
Customer Service Mgr



**Maricar Gonzales**  
Operations Supervisor



**Michael Pangilinan**  
Brokerage Supervisor





**As of August 31, 2018**

Arley Gregorio  
Sales Manager



Summary

MGR	4
TOTAL	4

Ella Flores  
Business Devt Manager



Vacant  
Business Devt Manager

Eric Bato  
Business Devt Manager



**As of August 31, 2018**

Summary	Officer	1
	MGR	2
	TM	1
	TOTAL	4



**As of August 31, 2018**

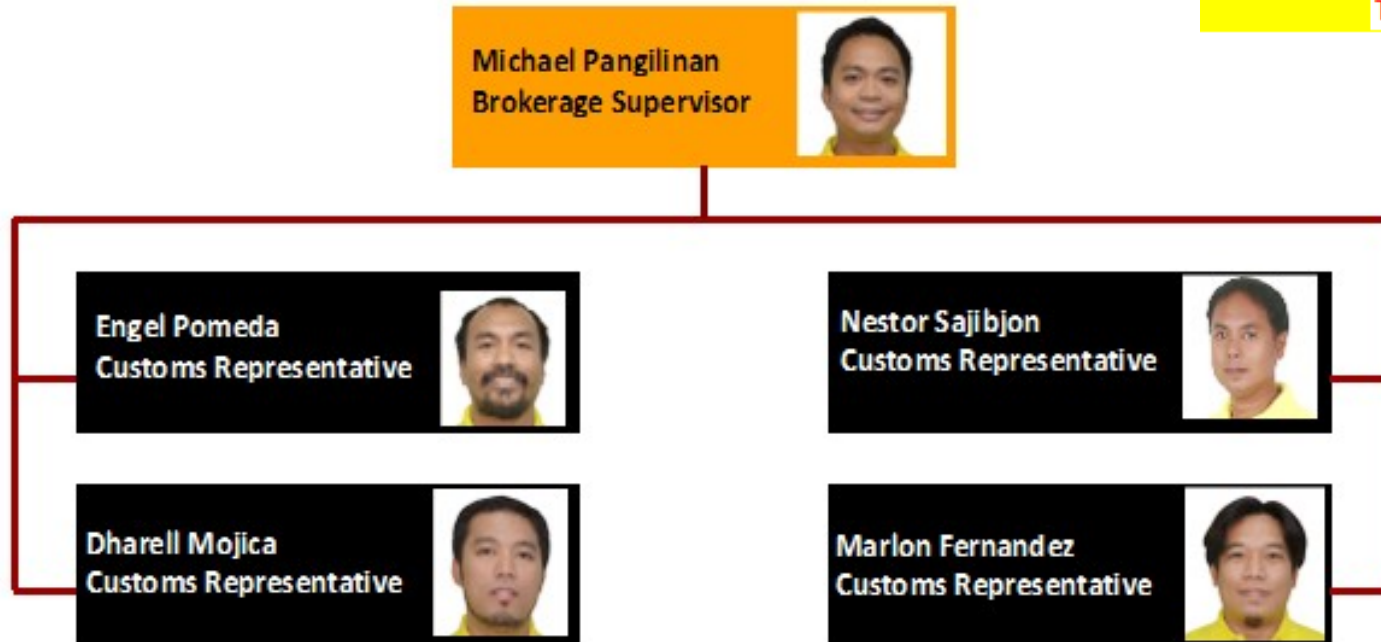
Summary	MGR	1
	TM	2
	Inorg	4
	TOTAL	7





**As of August 31, 2018**

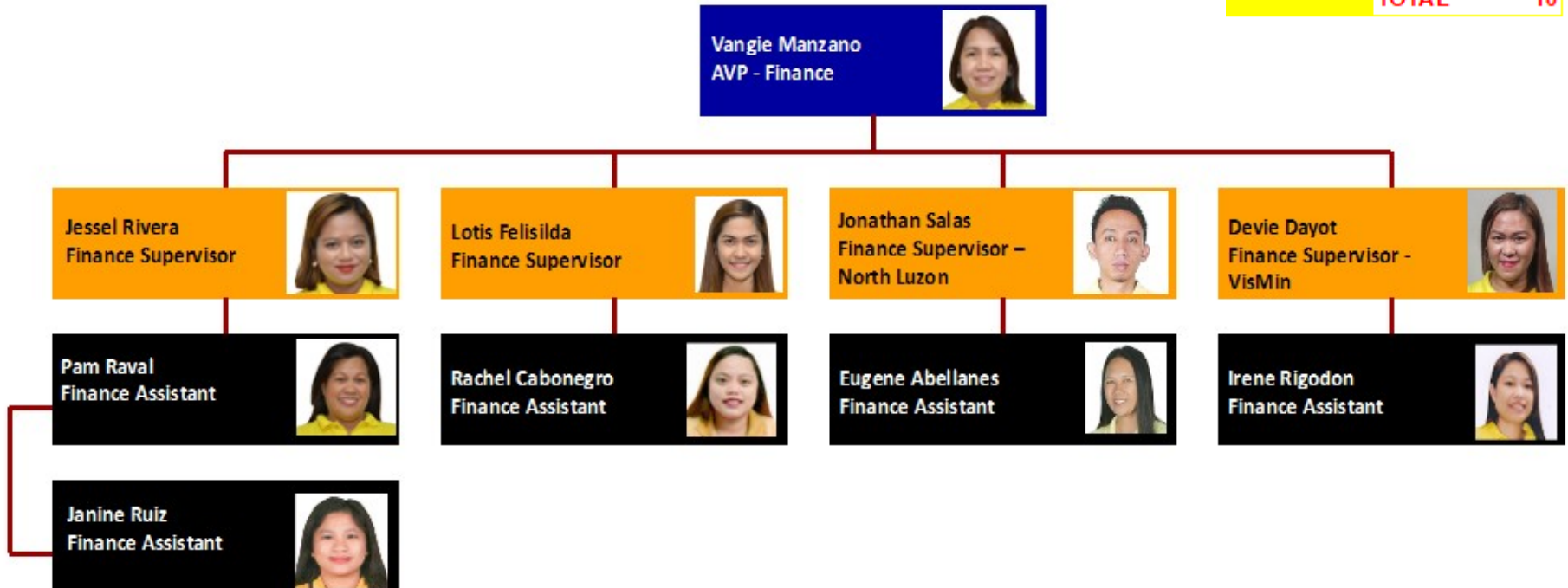
Summary	SUP	1
	TM	4
	TOTAL	5





**As of August 31, 2018**

Summary	Officer	1
	SUP	4
	TM	5
	TOTAL	10





# VISION

We will be the **partner of choice** for **world class** supply chain solutions

# OUR MISSION

We exist to **provide**

**F**lexible, customized supply chain solutions

**F**un-filled and excellence - driven work environment for our team members

**F**ruitful relationship with our partners

**F**inancially rewarding investment for our shareholders

# QUALITY POLICY

We at **F2** Logistics Philippines, Inc. and **F2** Global Logistics Inc. are committed to be the **PARTNER OF CHOICE** by providing customized supply chain solutions to our customers.

We maintain good relationships with our customers by:

1. Giving the highest quality service that is measured through performance standards
2. Complying to customer, statutory and regulatory requirements, and
3. Constantly improving our quality management system that will enable the company to exceed expectations

# iSERVE

Domestic • International • Land Transportation • Cold Chain • Customs Brokerage  
ISO Tank • Project Cargo • Warehousing • Contract Logistics

SUPPLY CHAIN (02) 328 2332 • BUSINESS SOLUTIONS (02) 826 0590

VALUE CHAIN (02) 553 5632 • F2 GLOBAL (02) 826 3216

**WWW.F2LOGISTICS.COM**



**F2 GLOBAL LOGISTICS**  
LET'S MOVE. NOW.