

F2 Logistics Safety Health & Environment Committee

Executive Summary Report

November 2019

For the month of November 2019, F2 SHE Committee Programs started the month with the Mandatory 8hr Safety and Health Awareness Seminar for Batch 4, divided into two parts, 1st part was conducted last November 9 (Saturday) and November 23 (Saturday) for 2nd part. It was attended by 24 employees, including some mechanics from our motor pool were part of the attendees.

This is to comply with D.O. 198-18 of R.A. 11058 under Section 16. Safety and Health Training. (b) All workers shall undergo the mandatory workers' OSH seminar as prescribed by DOLE which shall be jointly participated by workers and employers.



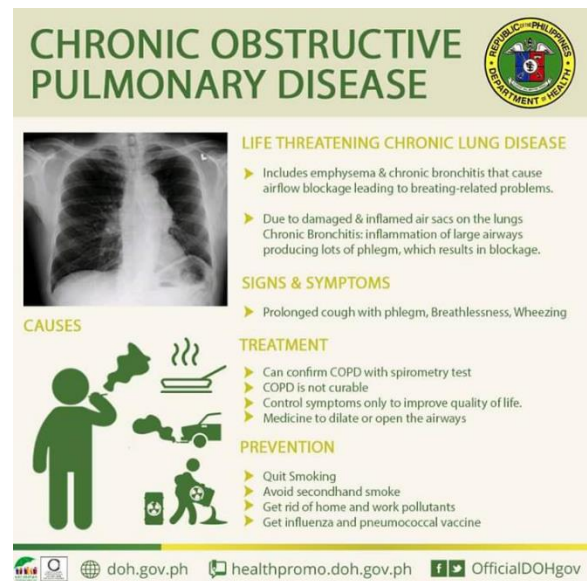
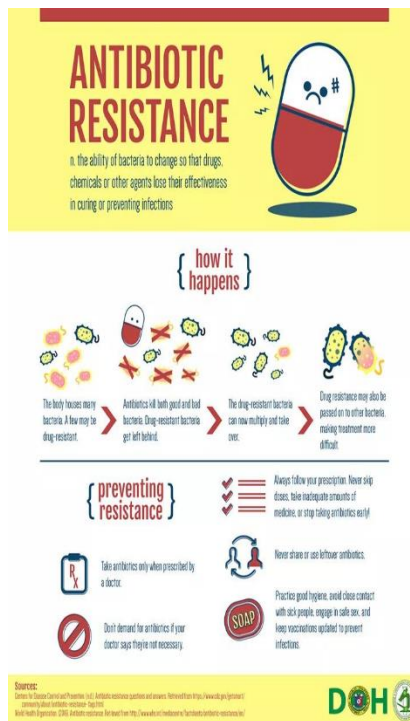


F2 LOGISTICS
LET'S MOVE. NOW.



F2 GLOBAL LOGISTICS
LET'S MOVE. NOW.

As part of F2 SHE Committee's duty to educate our employees on safety, health and environment, Our Health Team of the SHE Committee are constantly giving out information on different issues, concerns on their health through email blasts.



Subject	From	Date
Health Committee Chronic Obstructive Pulmonary Disease (COPD) Awareness Month	HR Services	11/28/2019, 11:44 pm
F2 Fun Fridays: Karaoke Night 6PM, UNIT 2	HR Services	11/28/2019, 6:21 pm
Thanksgiving Mass on November 29, 2019	HR Services	11/28/2019, 4:13 pm
reminder: Guidelines F2 2019 Christmas Station ID	HR Services	11/28/2019, 1:05 pm
YOU'RE INVITED: Functional & Business Requirements w/ Basic Flowcharting	HR Services	11/27/2019, 2:56 pm
2019 Christmas Party Presentation Practice Schedule for Unit 8	HR Services	11/26/2019, 3:19 pm
F2 Fun Fridays: Karaoke Night	HR Services	11/23/2019, 1:48 pm
CHRISTMAS CAROLS 2019	HR Services	11/23/2019, 1:17 pm
Health Committee World Antibiotic Awareness Week	HR Services	11/23/2019, 10:42 am
Reminder: Submission and Approval of Time Sheet, OT and Leave Application	HR Services	11/22/2019, 6:36 pm
OSH ORIENTATION PART III NOV. 23, 9AM 2F, UNIT 2	HR Services	11/22/2019, 12:08 pm



F2 LOGISTICS
LET'S MOVE. NOW.



F2 GLOBAL LOGISTICS
LET'S MOVE. NOW.

Safety Data Monitoring

For the month of November 2019, Safety Pyramid Report below is the reflection of our Company's SHE Committee commitment to the safety and health of its employees.

