



**F2 LOGISTICS**  
LET'S MOVE. NOW.

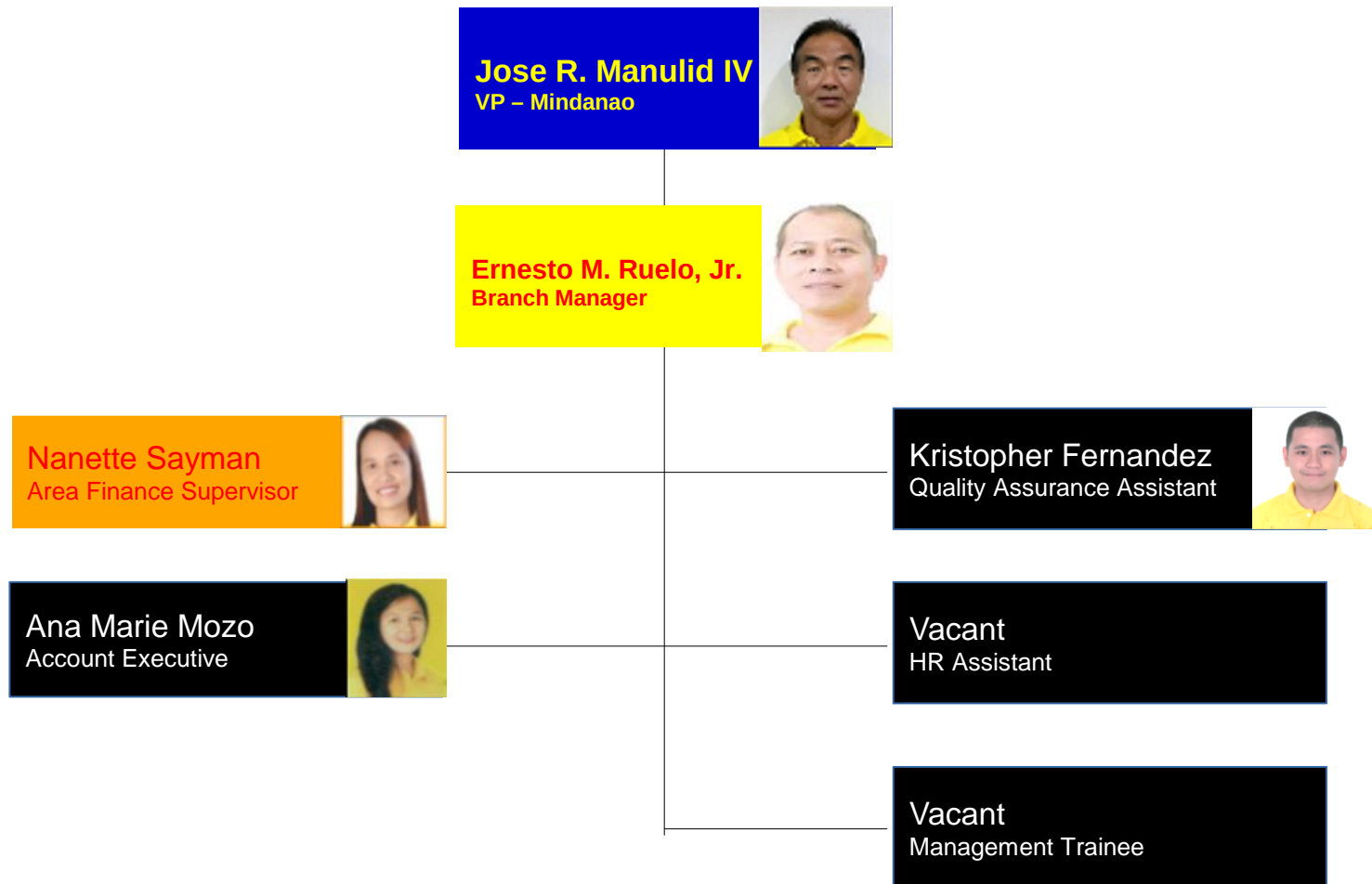


**iSERVE**

# F2 DAVAO

## ORGANIZATIONAL CHART






<b>SUMMARY</b>	Officer	1
	Manager	1
	Supervisor	1
	Staff	1
	Inorganic	4
	<b>TOTAL</b>	<b>8</b>



**Jose R. Manulid IV**  
VP – Mindanao




**Ernesto M. Ruelo, Jr.**  
Branch Manager




**Kristopher Fernandez**  
Quality Assurance Assistant




**Nanette Sayman**  
Area Finance Supervisor



**Jannel Escote**  
Finance Assistant (OPS)




**Elvie Paje**  
Encoder



**Jesson Principe**  
Collector/Messenger



**Rick Marl Paden**  
AR Analyst



**Persian Kay Orbiso**  
Billing Assistant




<b>SUMMARY</b>	Supervisor	1
	Staff	4
	Inorganic	23
	<b>TOTAL</b>	<b>28</b>

**Jose R. Manulid IV**  
VP – Mindanao




**Ernesto M. Ruelo, Jr.**  
Branch Manager



**Kristopher Fernandez**  
Quality Assurance Assistant




**Ana Marie Mozo**  
Account Executive



**Russel Aguilon**  
Operations Supervisor




**Christine Tulabing**  
CSR – SC




**Vacant**  
Team Leader


**Melody Ebon**  
Team Leader



**Aziza Mansawe**  
Inbound Coordinator –  
BS& Promats



**Kimberly Francisco**  
Inbound Coordinator –  
UL-DCL & Mamplasan



**Junalyn Pacalda**  
Inbound Coordinator  
LCL/FCL Intermodal



**Donna Mae Gamale**  
Inbound Coordinator  
FCL – SC & VC



**Taya Cris Tindegan**  
Encoder



**Jeffry Manayaga**  
Encoder



**Vacant**  
Claims Assistant

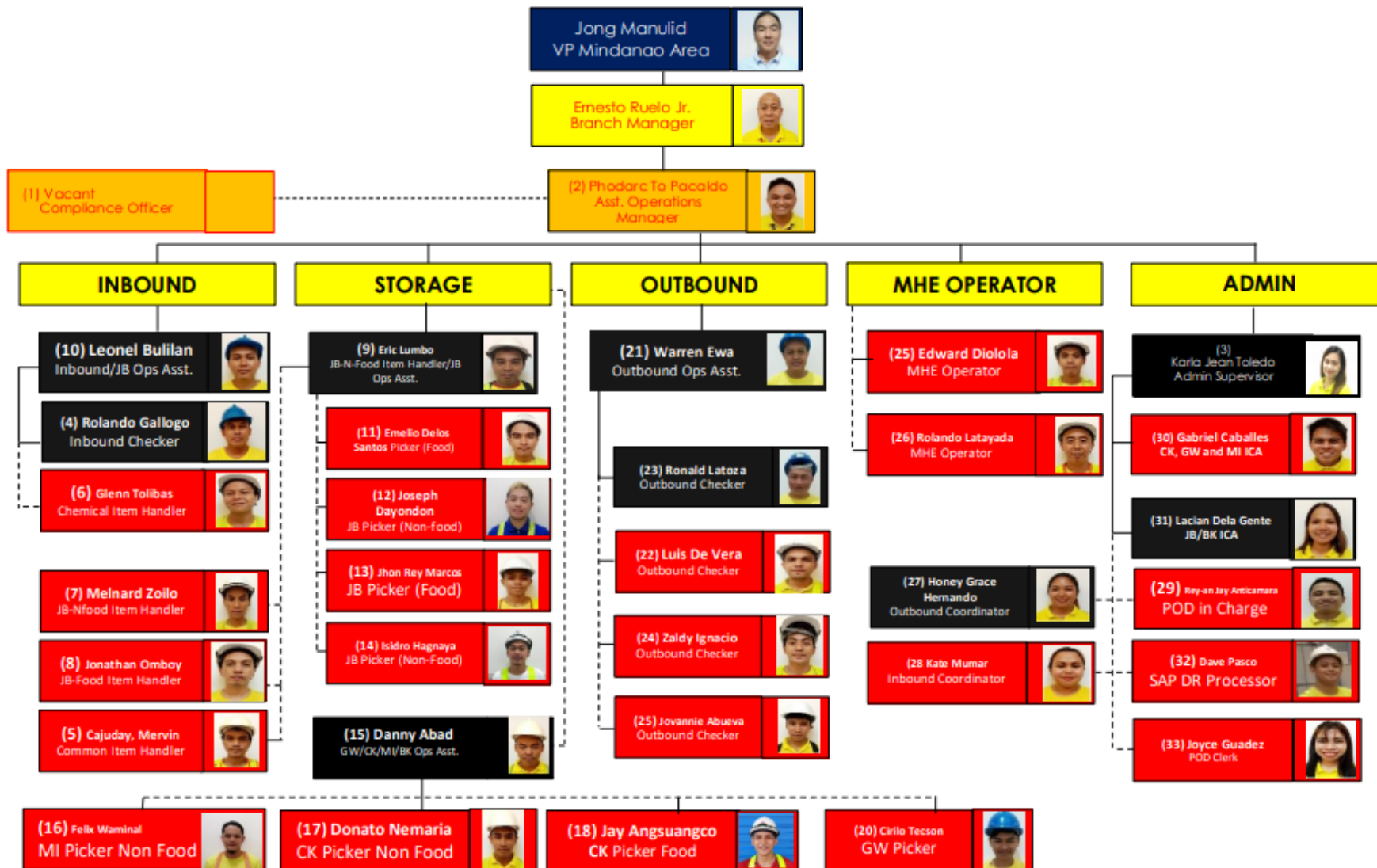
**Pier Rep - 2**

**Airport Rep - 2**

**Warehouseman - 1**

**Helpers - 2**

**Checker - 7**







**F2 LOGISTICS**  
LET'S MOVE. NOW.

## VISION

We will be the **partner of choice** for **world class** supply chain solutions

## OUR MISSION

We exist to **provide**

Flexible, customized supply chain solutions

Fun-filled and excellence - driven work environment for our team members

Fruitful relationship with our partners

Financially rewarding investment for our shareholders

## QUALITY POLICY

We at **F2 Logistics Philippines, Inc.** and **F2 Global Logistics Inc.**

are committed to be the **PARTNER OF CHOICE** by providing customized supply chain solutions to our customers.

We maintain good relationships with our customers by:

1. Giving the highest quality service that is measured through performance standards
2. Complying to customer, statutory and regulatory requirements, and
3. Constantly improving our quality management system that will enable the company to exceed expectations

## iSERVE

Domestic • International • Land Transportation • Cold Chain • Customs Brokerage  
ISO Tank • Project Cargo • Warehousing • Contract Logistics

SUPPLY CHAIN (02) 328 2332 • BUSINESS SOLUTIONS (02) 826 0590

VALUE CHAIN (02) 553 5632 • F2 GLOBAL (02) 826 3216

[www.F2Logistics.com](http://www.F2Logistics.com)