



F2 LOGISTICS
LET'S MOVE. NOW.

10
F2 LOGISTICS
YEARS



iSERVE

OFFICE OF THE PRESIDENT

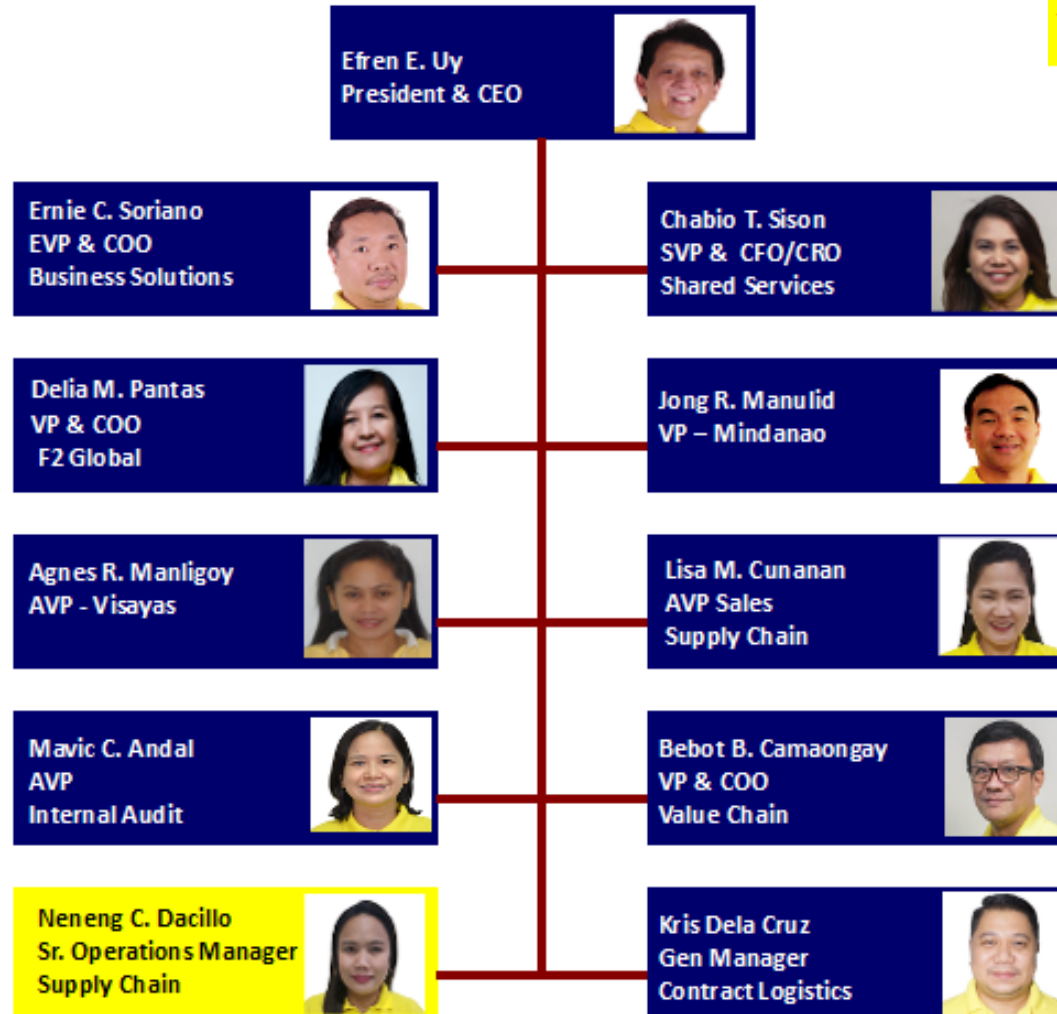
Org Chart

as June 30, 2018



As of June 30, 2018

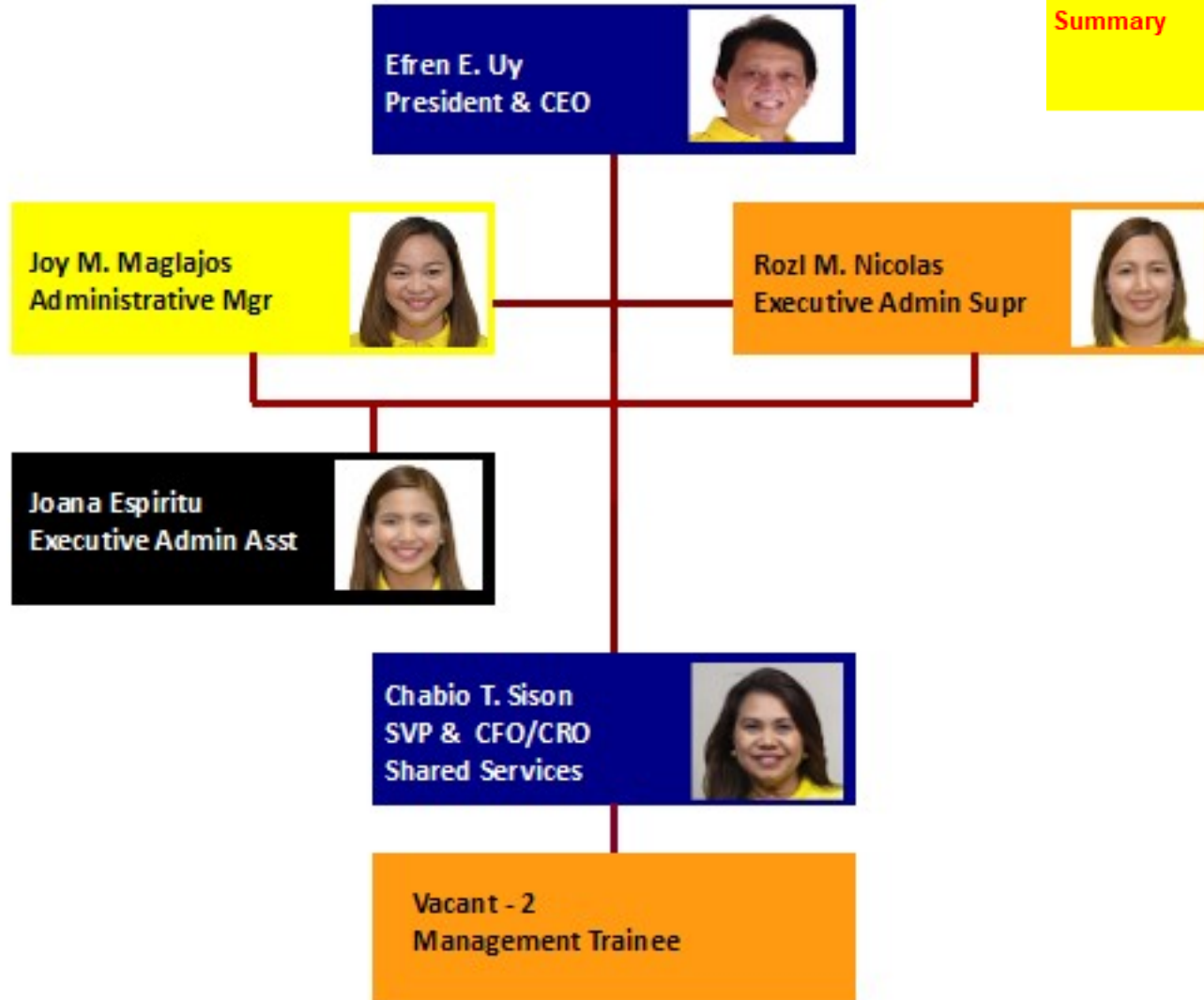
Summary	Officer	10
	MGR	1
	TOTAL	11



As of June 30, 2018

Summary

Officer	2
MGR	1
SUP	3
TM	1
TOTAL	7





F2 LOGISTICS
LET'S MOVE. NOW.

VISION

We will be the **partner of choice**
for **world class** supply chain solutions

OUR MISSION

We exist to **provide**

Flexible, customized supply chain solutions

Fun-filled and excellence - driven work environment for our team members

Fruitful relationship with our partners

Financially rewarding investment for our shareholders

iSERVE

Domestic • International • Land Transport • Cold Chain • Customs Brokerage
ISO Tank • Project Cargo • Warehousing • Contract Logistics

SUPPLY CHAIN (02) 328 2332 • BUSINESS SOLUTIONS (02) 826 0590

VALUE CHAIN (02) 553 5632 • F2 GLOBAL (02) 826 3216

www.f2logistics.com