



F2 LOGISTICS
LET'S MOVE. NOW.

10
F2 LOGISTICS
YEARS



iSERVE

Shared Services Org Chart

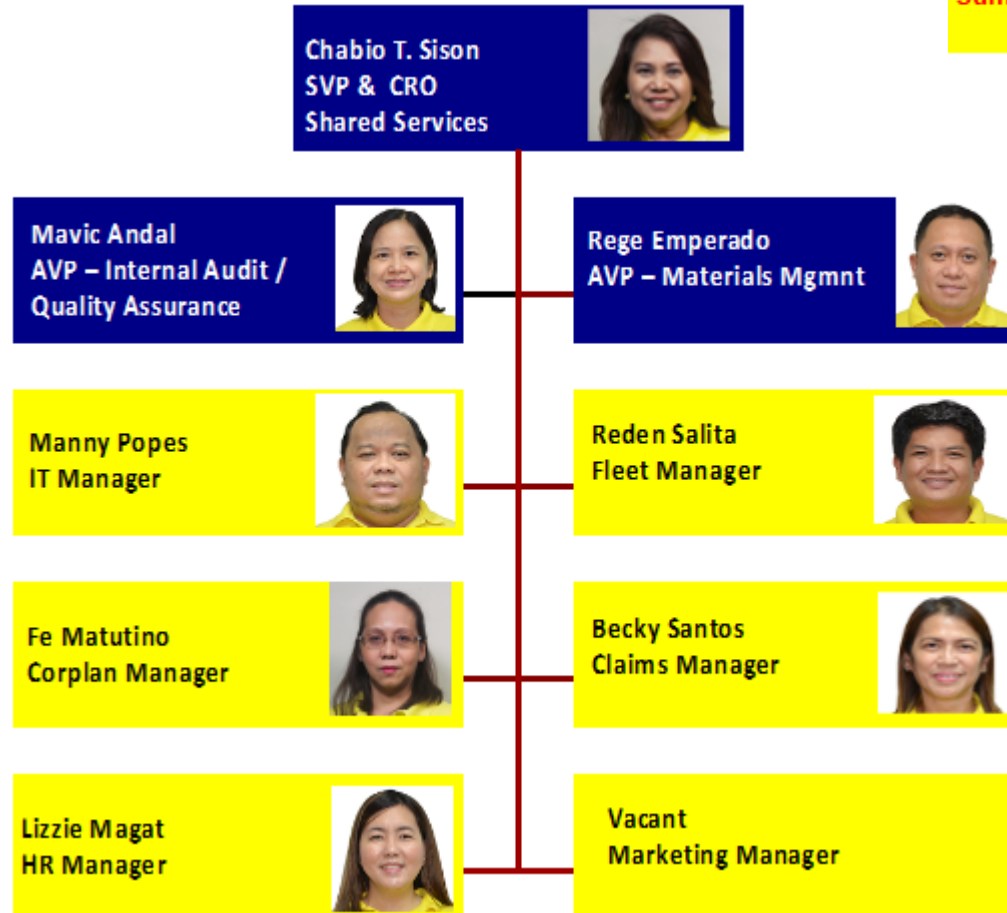
ao June 30, 2018



As of June 30, 2018

Summary

OFFICER	3
MGR	6
TOTAL	9



As of June 30, 2018

Summary	Manager	1
	Staff	2
	TOTAL	3

Fe Matutino
Corplan Manager



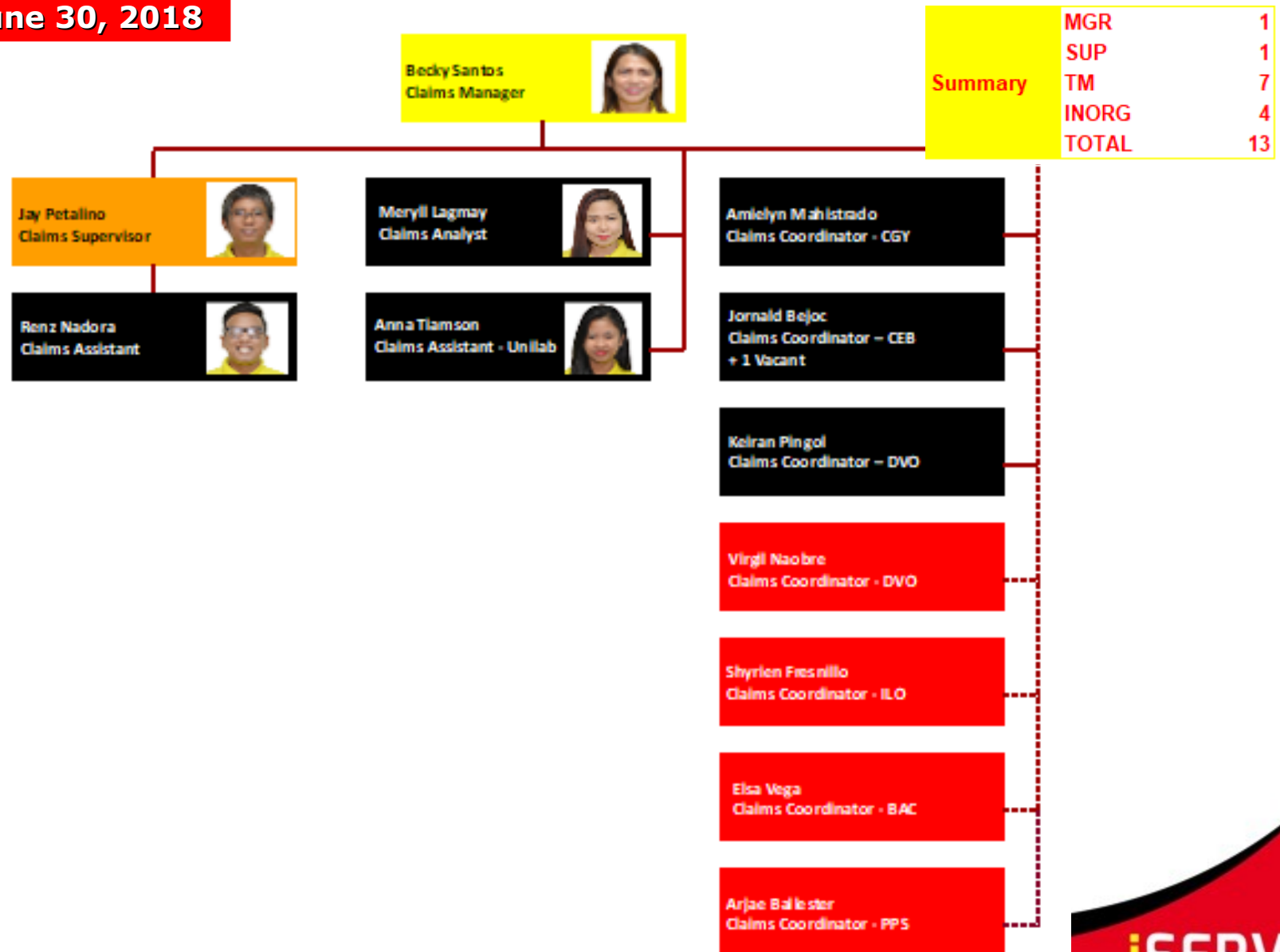
Ivy Brazil
Finance Analyst



Reme Peji
Finance Analyst



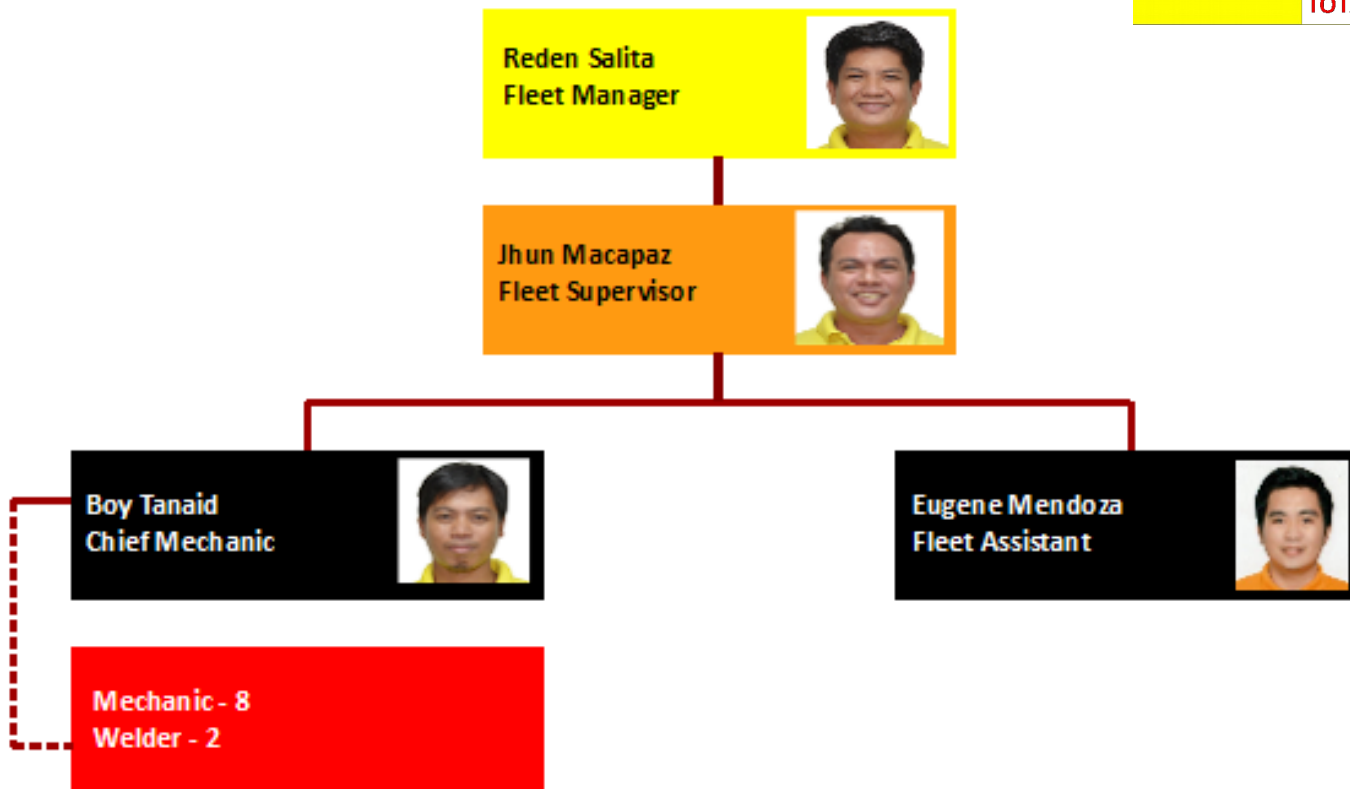
As of June 30, 2018



As of June 30, 2018

Summary

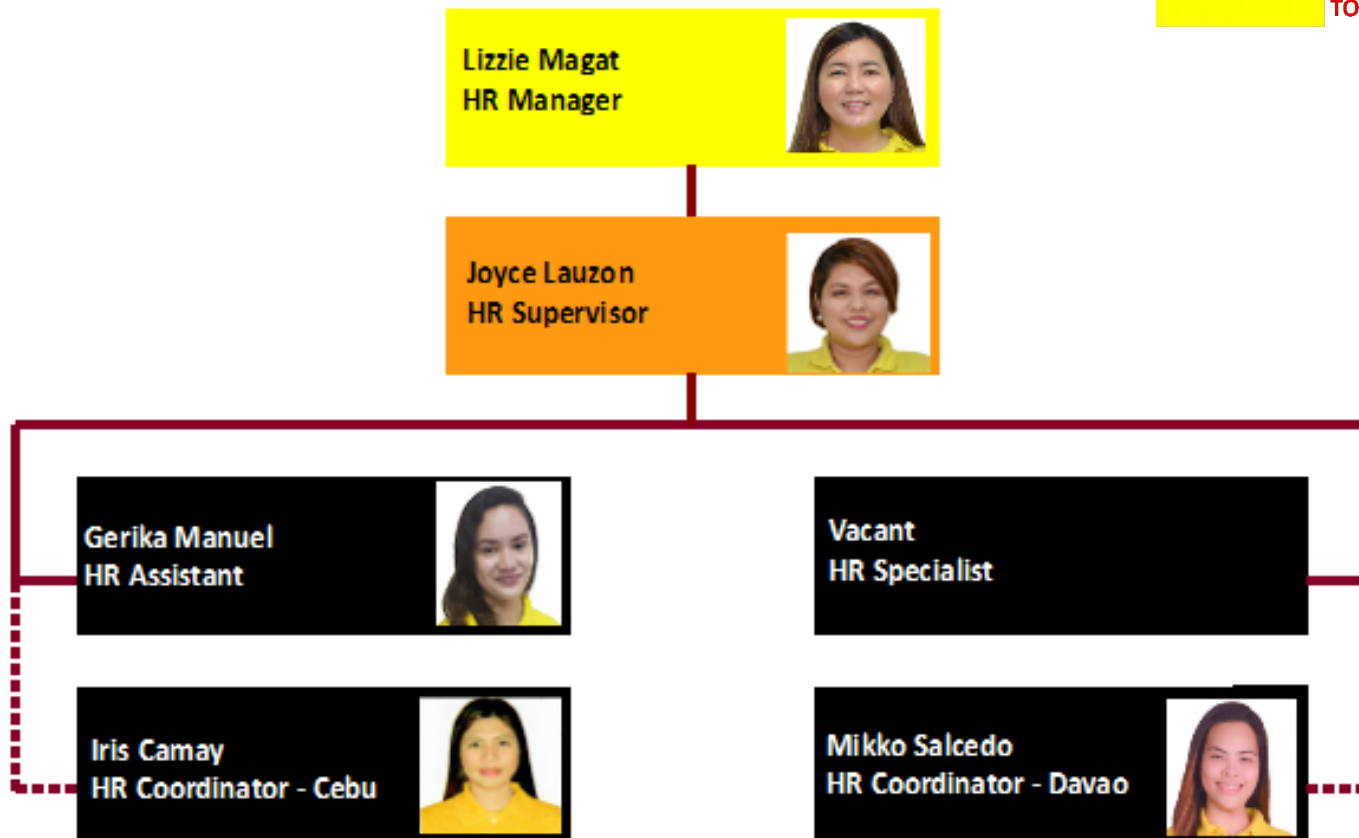
MGR	1
SUP	1
TM	3
INORG	10
TOTAL	15



As of June 30, 2018

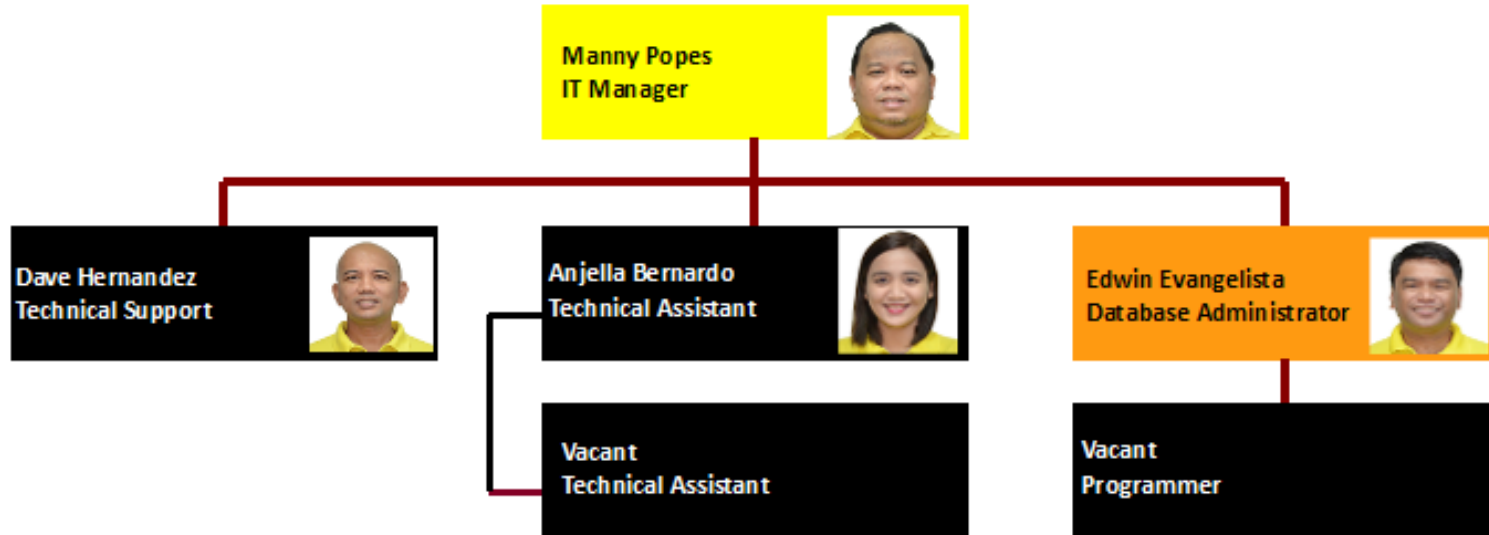
Summary

Manager	1
Supervisor	1
Staff	4
TOTAL	6



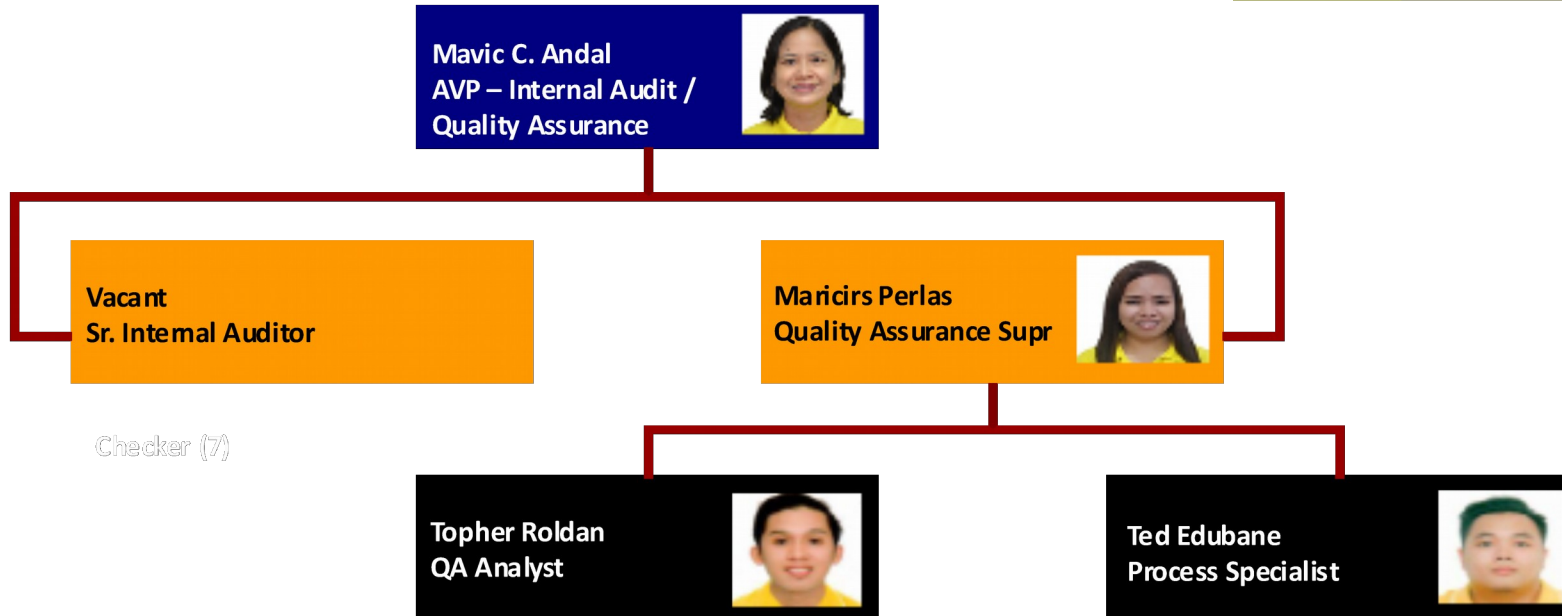
As of June 30, 2018

Summary	MGR	1
	SUP	1
	TM	4
	TOTAL	6



As of June 30, 2018

Summary	Officer	1
	SUP	2
	TM	2
	TOTAL	5



As of June 30, 2018

Summary	MGR	1
	TM	2
	TOTAL	3

Chabio T. Sison
SVP – Shared Services
CFO/CRO



Vacant
Marketing Manager

Erika Uy
Marketing Executive

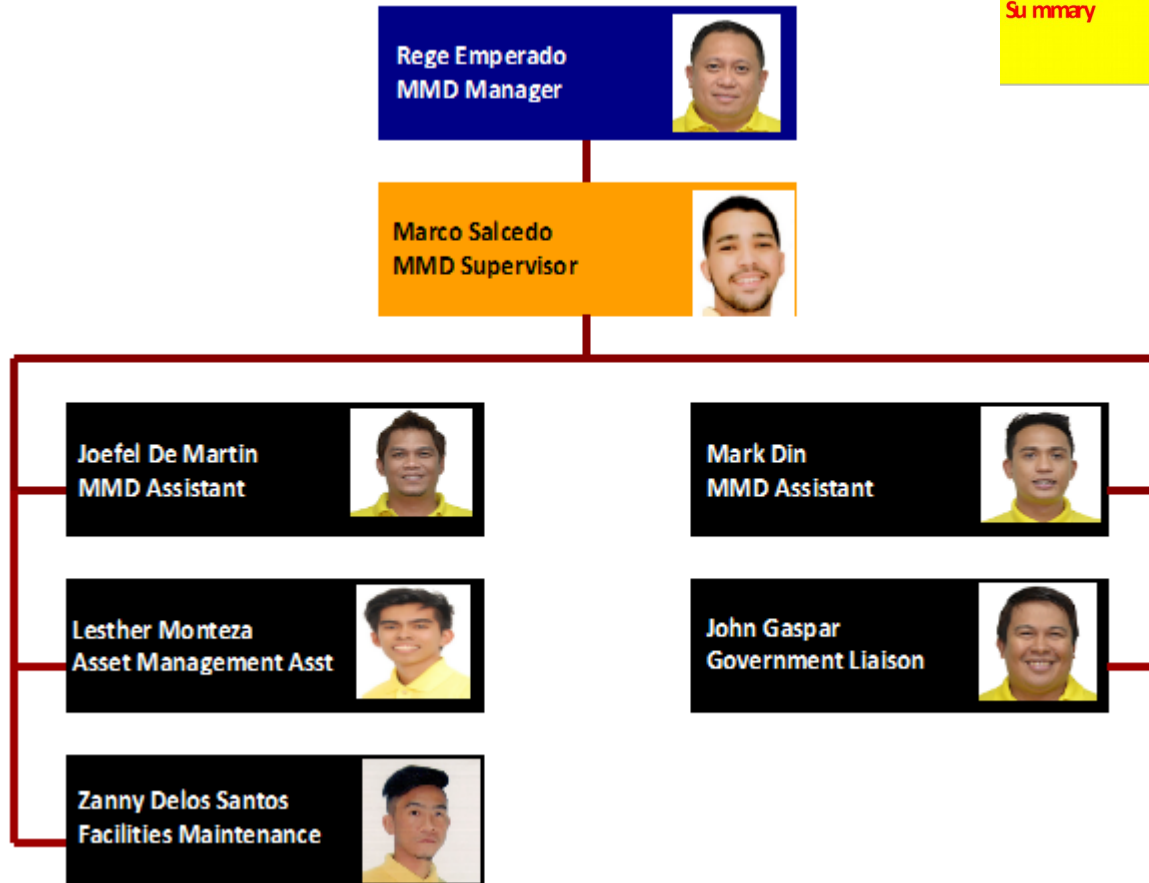


Jam Alves
Marketing Executive



As of June 30, 2018

Summary	Officer
	SUP
	TM
	TOTAL





F2 LOGISTICS
LET'S MOVE. NOW.

VISION

We will be the **partner of choice**
for **world class** supply chain solutions

OUR MISSION

We exist to **provide**

Flexible, customized supply chain solutions

Fun-filled and excellence - driven work environment for our team members

Fruitful relationship with our partners

Financially rewarding investment for our shareholders

iSERVE

Domestic • International • Land Transport • Cold Chain • Customs Brokerage
ISO Tank • Project Cargo • Warehousing • Contract Logistics

SUPPLY CHAIN (02) 328 2332 • BUSINESS SOLUTIONS (02) 826 0590

VALUE CHAIN (02) 553 5632 • F2 GLOBAL (02) 826 3216

www.f2logistics.com