



F2 LOGISTICS
LET'S MOVE. NOW.

10
F2 LOGISTICS
YEARS



iSERVE

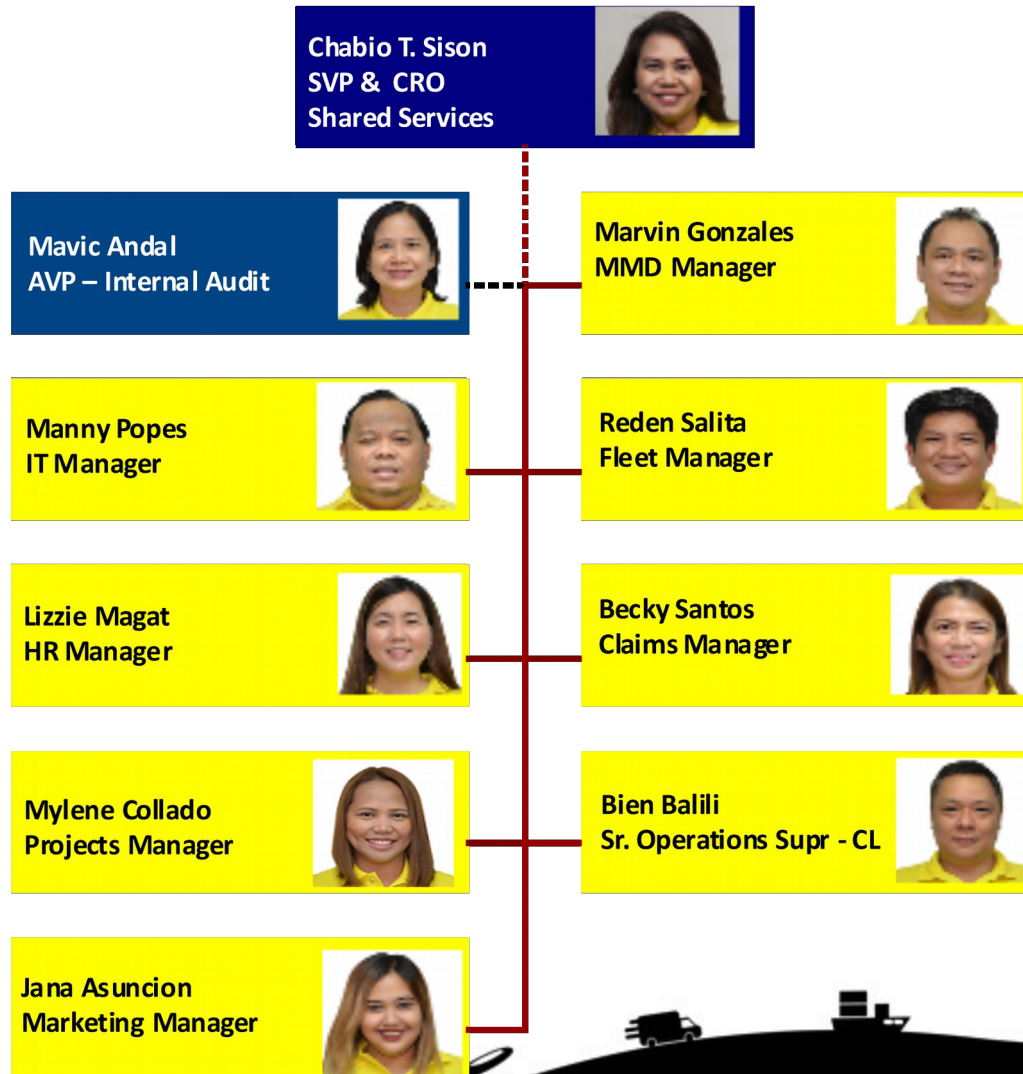
Shared Services Org Chart

ao May 31, 2017



As of May 31, 2017

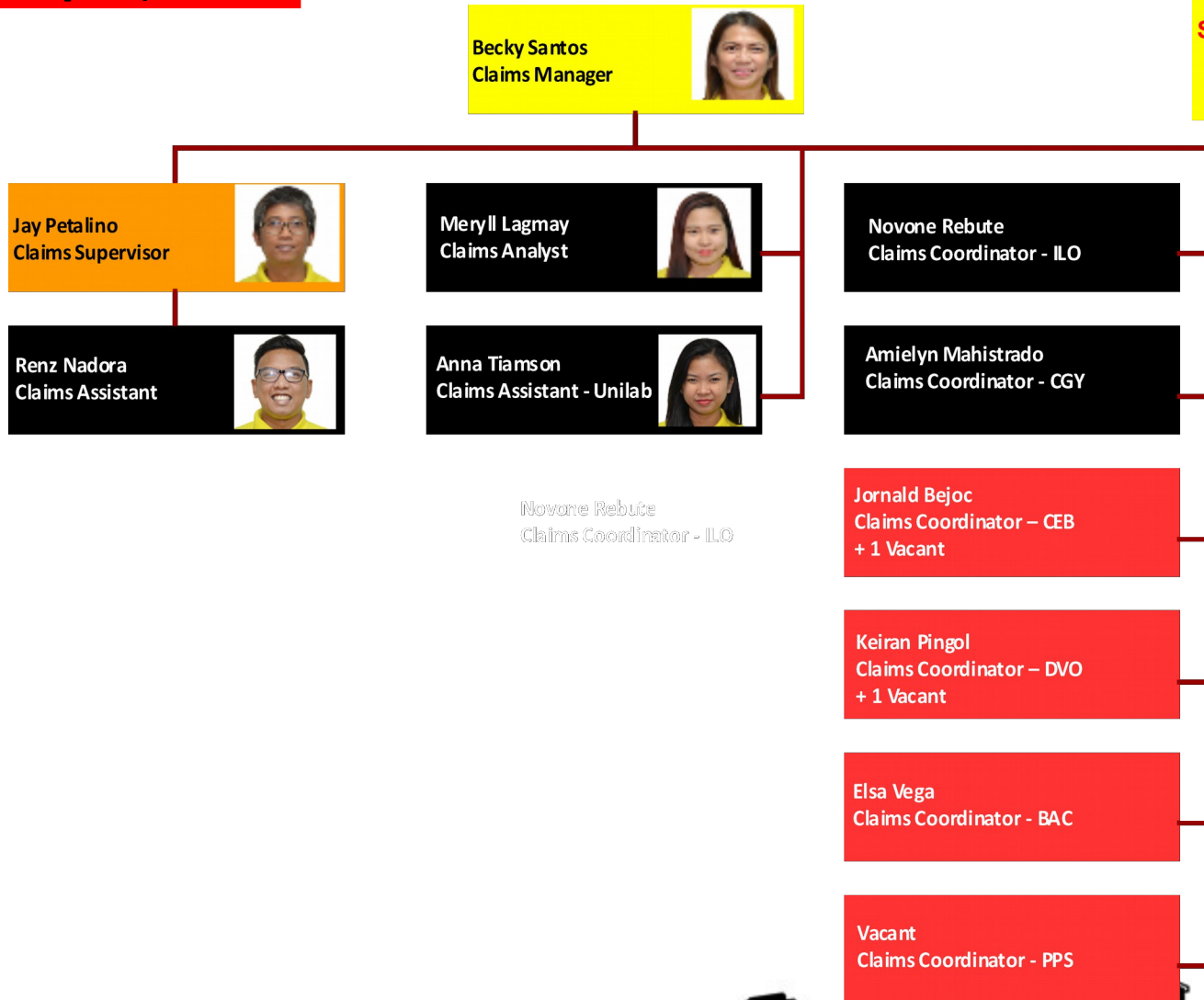
Summary	OFFICER	2
	MGR	8
	TOTAL	10



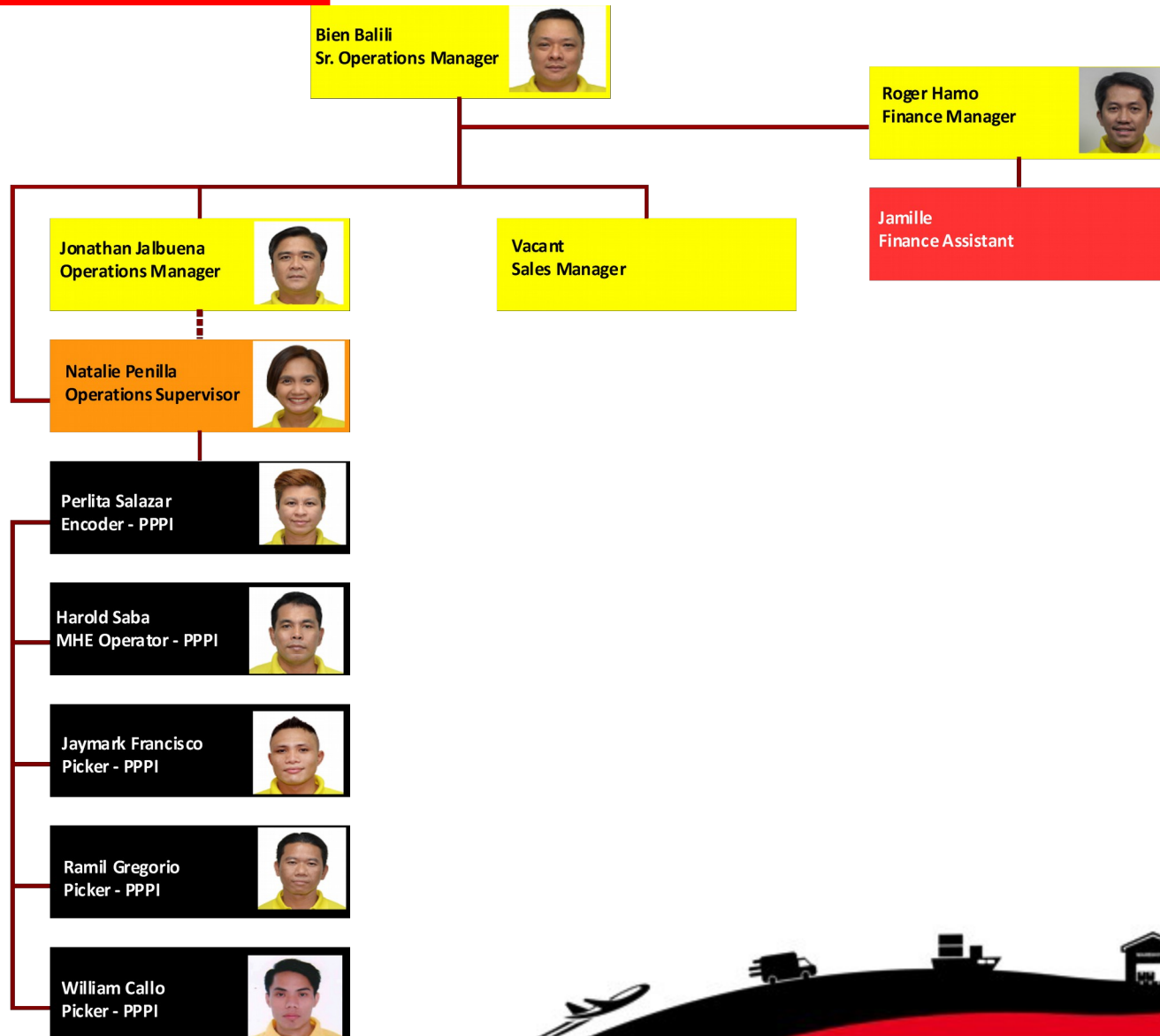
As of May 31, 2017

Summary

MGR	1
SUP	1
TM	5
INORG	6
TOTAL	13



As of May 31, 2017



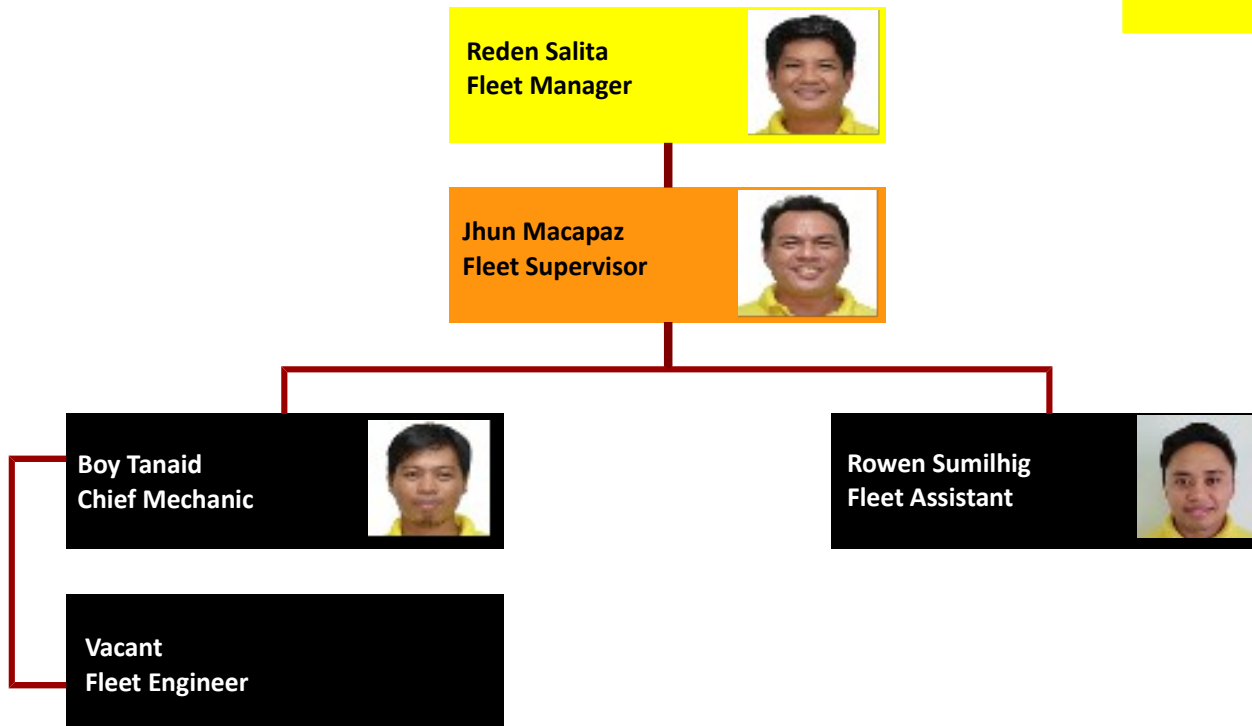
Summary

MGR	4
SUP	1
TM	5
INORG	1
TOTAL	11



As of May 31, 2017

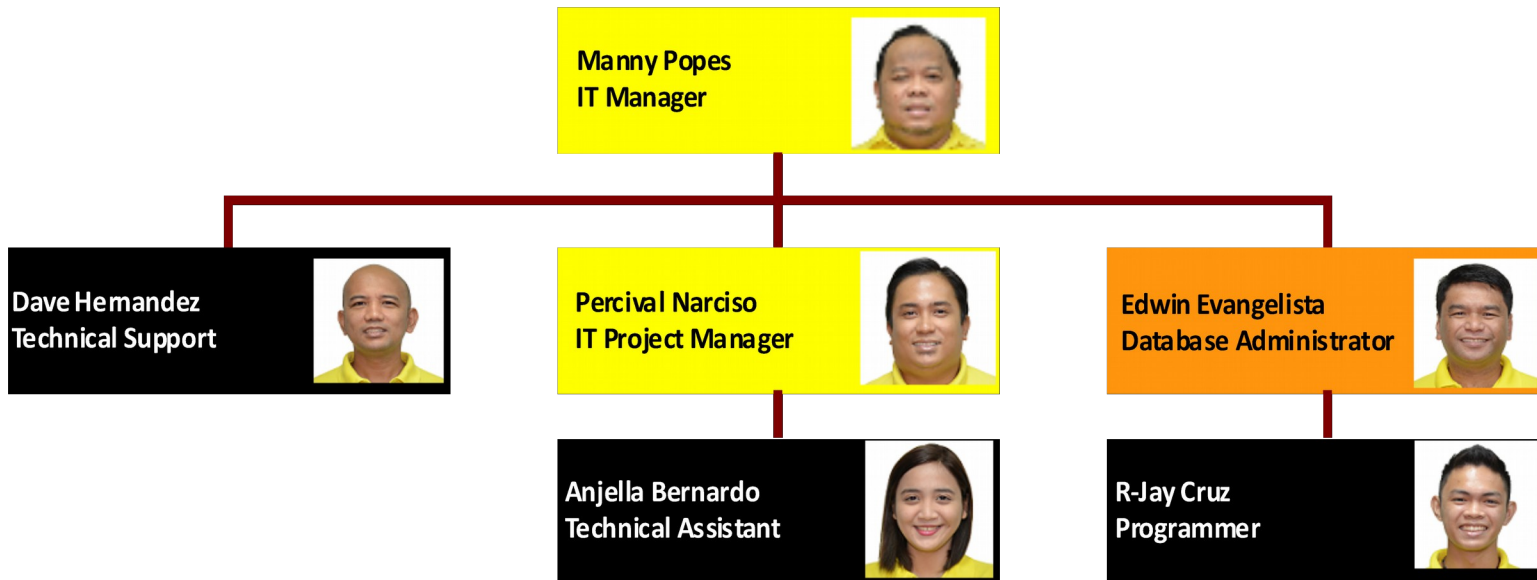
Summary	MGR	1
	SUP	1
	TM	3
	TOTAL	5



As of May 31, 2017

Summary

MGR	2
SUP	1
TM	3
TOTAL	6



As of May 31, 2017

Summary

MGR
SP
TOTAL

Mavic C. Andal
AVP – Internal Audit



Godo Quinonez
Sr. Internal Auditor



As of May 31, 2017

Summary

MGR	1
TM	4
TOTAL	5

Lizzie Magat
HR Manager



Joyce Anne Lauzon
HR Specialist



Jude Adam Roman
HR Assistant



Iris Camay
HR Coordinator - Cebu



Vacant
HR Coordinator - Davao



As of May 31, 2017

Summary	MGR	1
	TM	2
	TOTAL	3

Tatjana Asuncion
Marketing Manager



Erika Uy
Marketing Executive



Vacant
Marketing Executive



As of April 30, 2017

Marvin Gonzales
Materials Manager



Summary

MGR	1
TM	3
INORG	22
TOTAL	26

Joefel De Martin
MMD Assistant



Mark Din
MMD Assistant



Lesther Monteza
Asset Management Asst



John Gaspar
Government Liaison



Vacant
Handyman - 1

Security - 21



As of April 30, 2017

Summary	MGR	1
	SUP	1
	TM	2
	TOTAL	4

Mylene Collado
Projects/QAD Manager



Maricirs Perlas
Quality Assurance Supr



Topher Roldan
QA Analyst



Ted Edubane
Process Specialist





F2 LOGISTICS
LET'S MOVE. NOW.

VISION

We will be the **partner of choice**
for **world class** supply chain solutions

OUR MISSION

We exist to **provide**

Flexible, customized supply chain solutions

Fun-filled and excellence - driven work environment for our team members

Fruitful relationship with our partners

Financially rewarding investment for our shareholders

iSERVE

**Domestic • International • Land Transport • Cold Chain • Customs Brokerage
ISO Tank • Project Cargo • Warehousing • Contract Logistics**

SUPPLY CHAIN (02) 328 2332 • BUSINESS SOLUTIONS (02) 826 0590

VALUE CHAIN (02) 553 5632 • F2 GLOBAL (02) 826 3216

www.f2logistics.com