



**F2 LOGISTICS**  
LET'S MOVE. NOW.

10  
F2 LOGISTICS  
YEARS



**iSERVE**

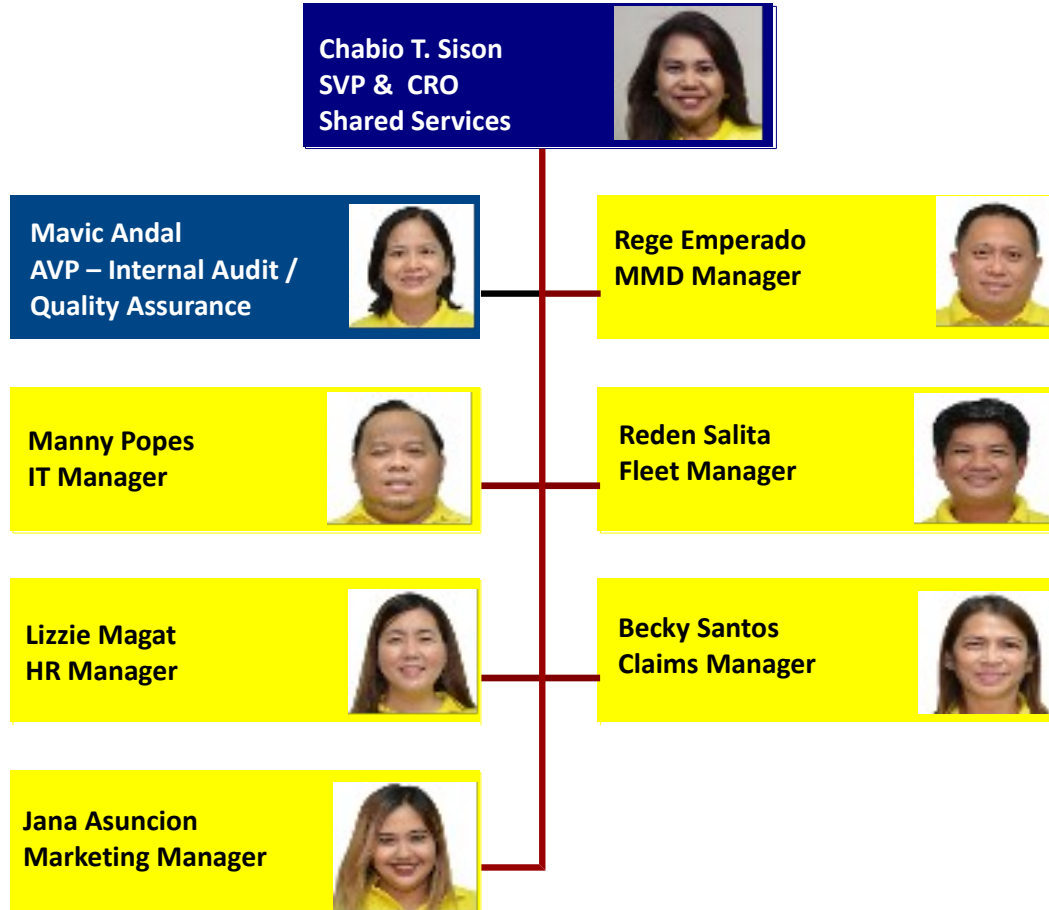
# Shared Services Org Chart

## ao October 31, 2017



**As of October 31, 2017**

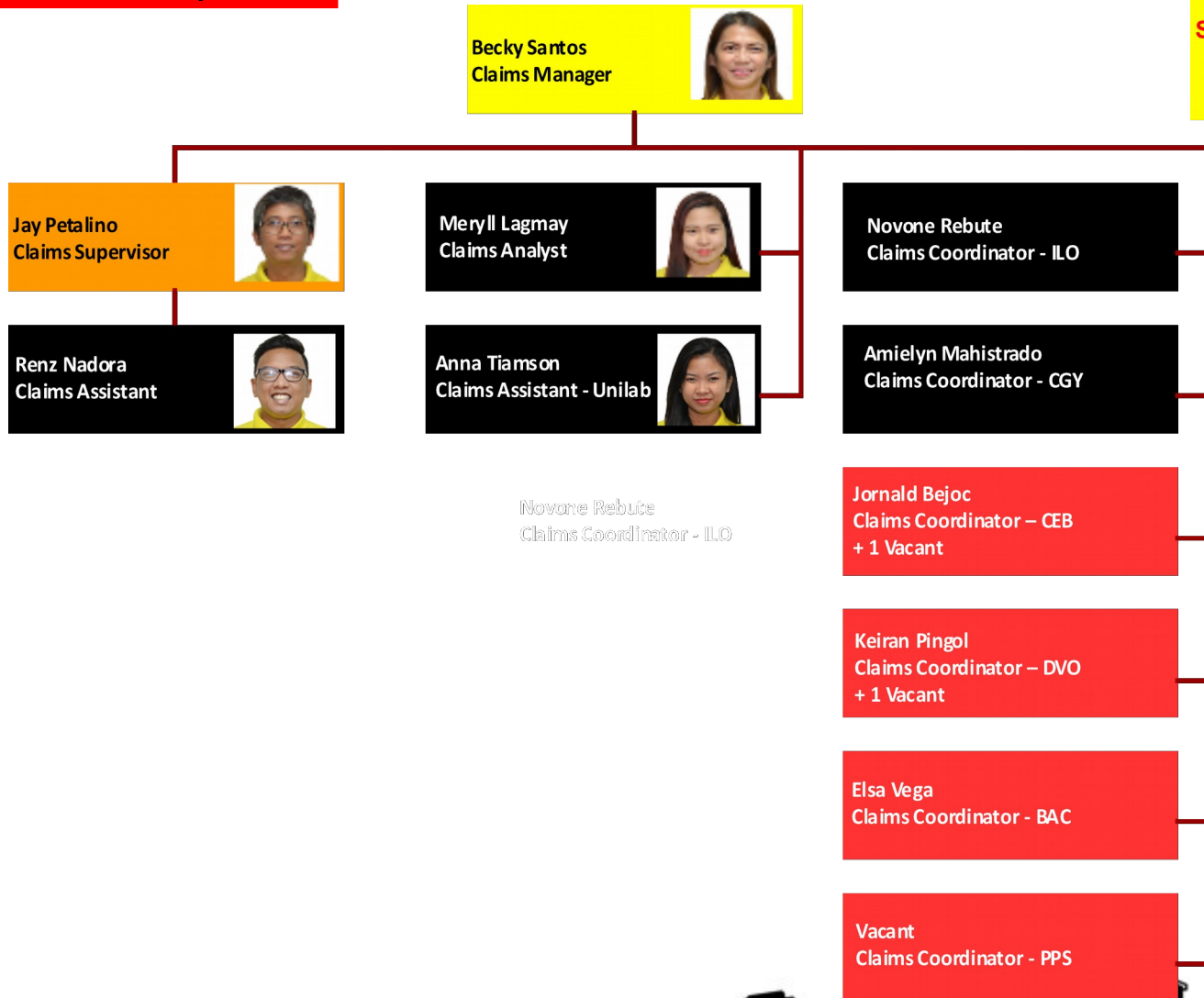
Summary	OFFICER	2
	MGR	6
	TOTAL	8



**As of October 31, 2017**

**Summary**

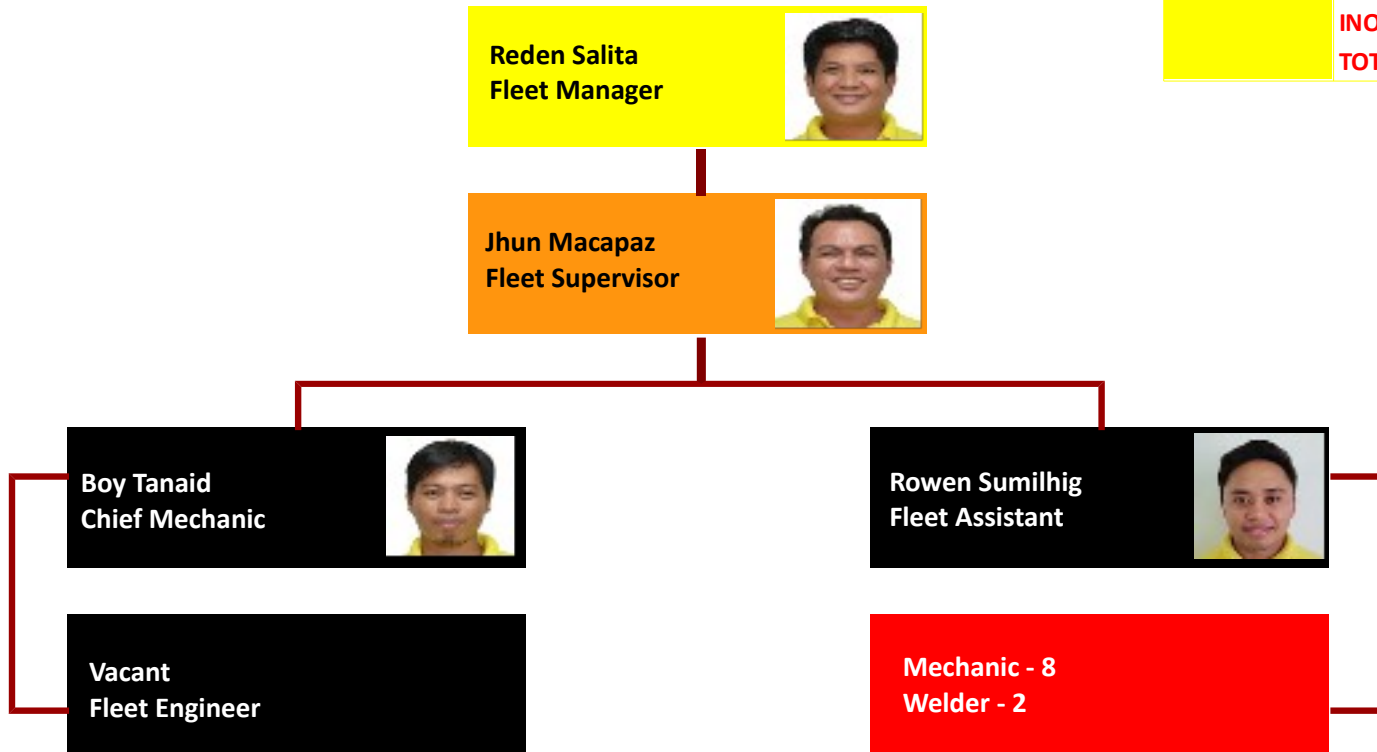
MGR	1
SUP	1
TM	5
INORG	6
<b>TOTAL</b>	<b>13</b>



Novone Rebute  
Claims Coordinator - ILO

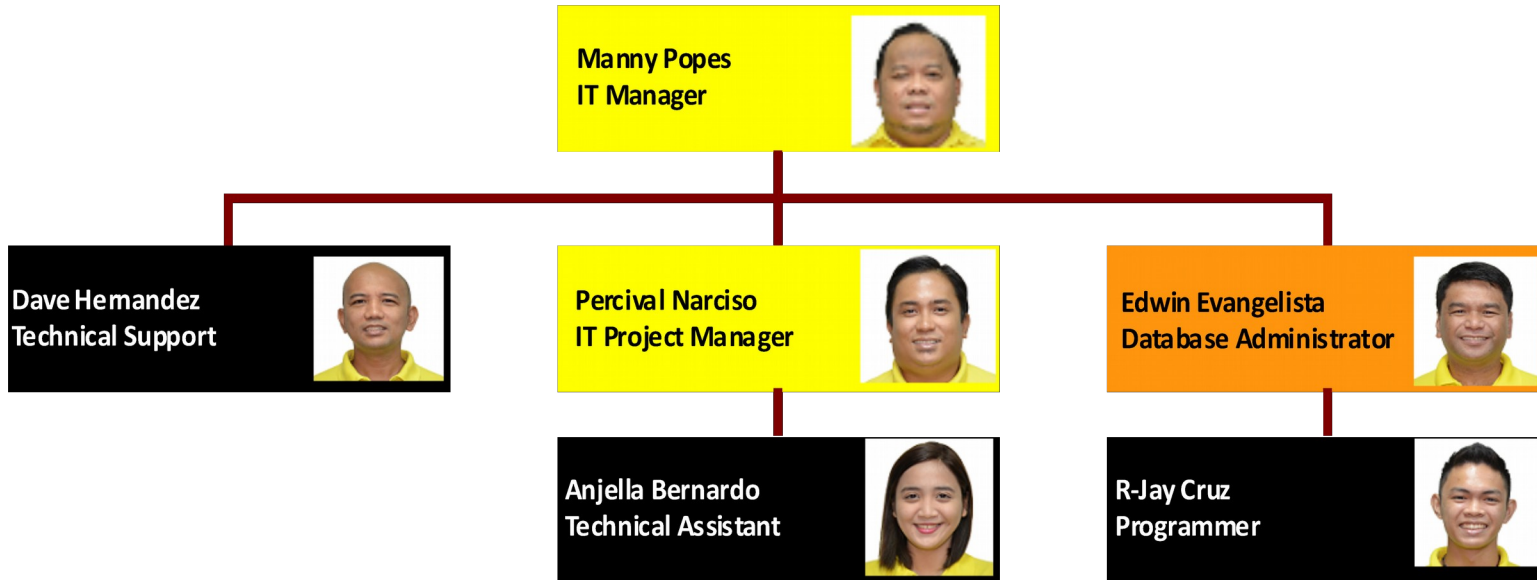
**As of October 31, 2017**

<b>Summary</b>	MGR	1
	SUP	1
	TM	3
	INORG	10
	<b>TOTAL</b>	<b>5</b>



**As of October 31, 2017**

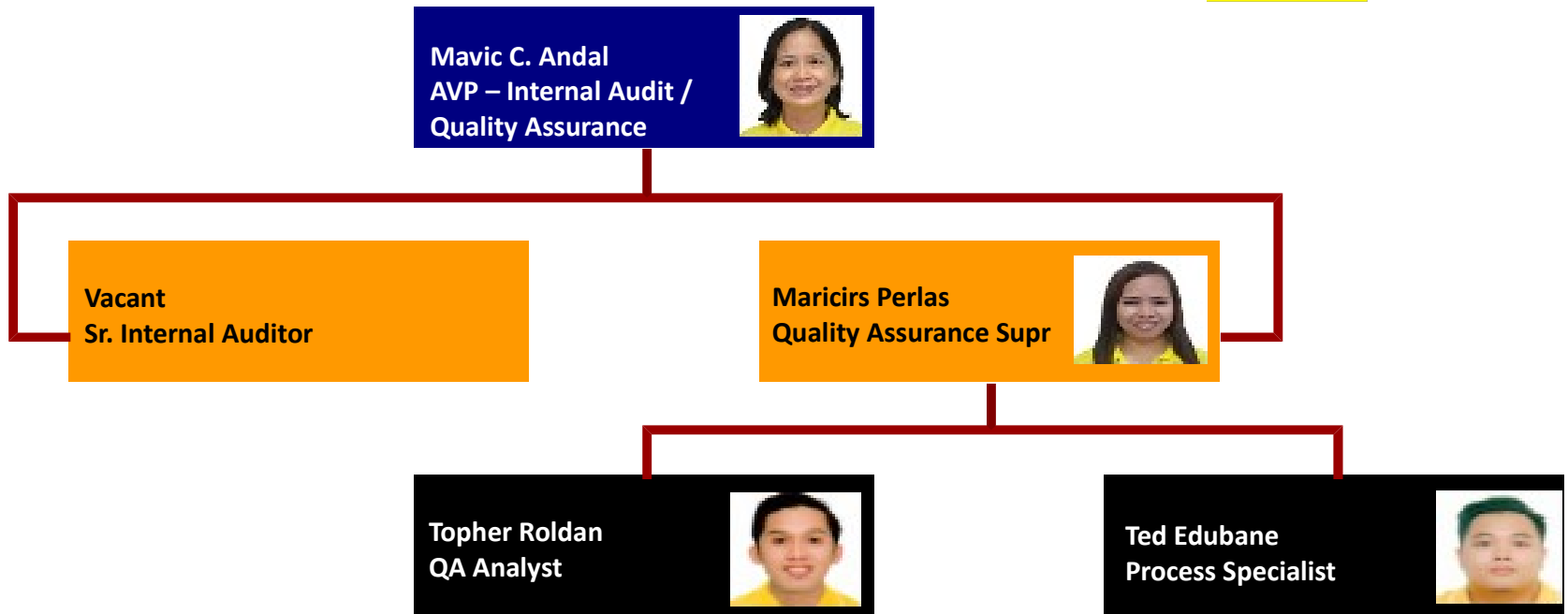
<b>Summary</b>	<b>MGR</b>	<b>2</b>
	<b>SUP</b>	<b>1</b>
	<b>TM</b>	<b>3</b>
	<b>TOTAL</b>	<b>6</b>



**As of October 31, 2017**

**Summary**

Officer	1
SUP	2
TM	2
<b>TOTAL</b>	<b>5</b>



**As of October 31, 2017**

Summary	MGR	1
	TM	4
	TOTAL	5





**As of October 31, 2017**

Summary	MGR	1
	TM	2
	TOTAL	3

**Tatjana Asuncion**  
Marketing Manager



**Erika Uy**  
Marketing Executive

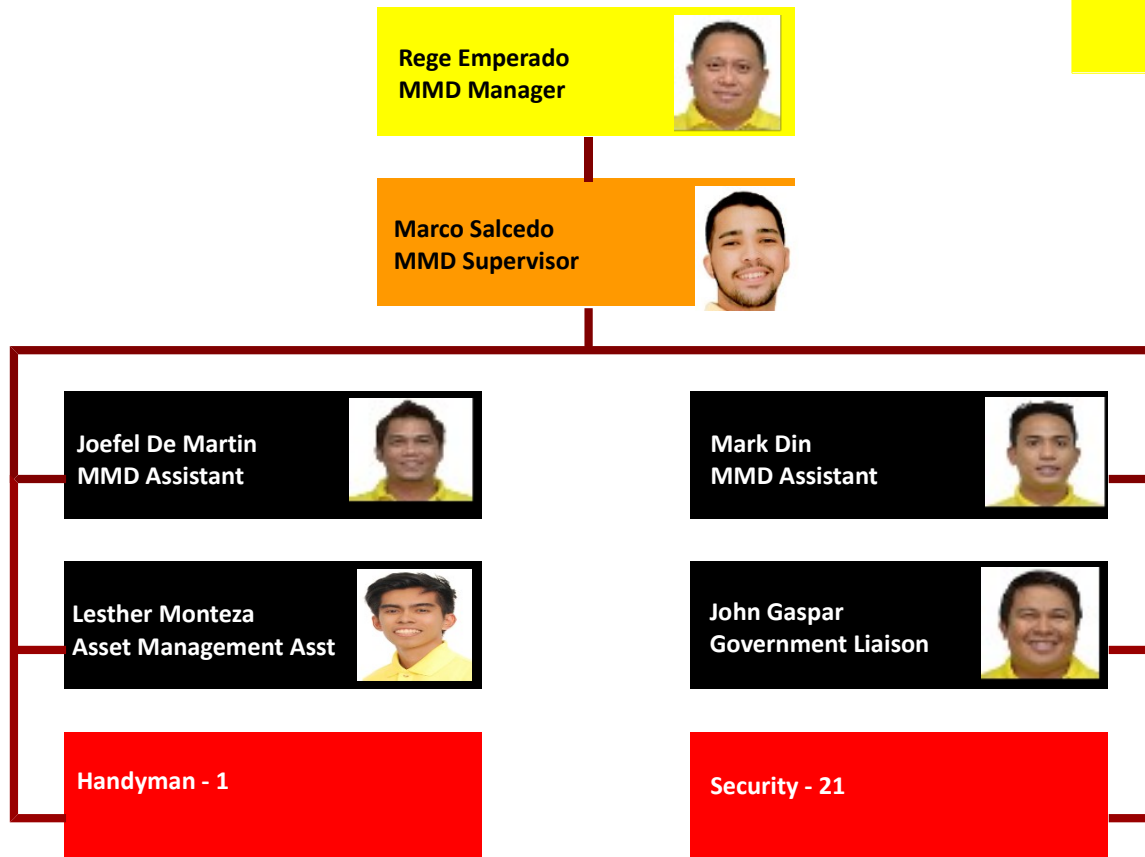


**Vacant**  
Marketing Executive



**As of October 31, 2017**

<b>Summary</b>	MGR	1
	SUP	1
	TM	3
	INORG	22
	<b>TOTAL</b>	<b>27</b>





**F2 LOGISTICS**  
LET'S MOVE. NOW.

## VISION

We will be the **partner of choice**  
for **world class** supply chain solutions

## OUR MISSION

We exist to **provide**

**F**lexible, customized supply chain solutions

**F**un-filled and excellence - driven work environment for our team members

**F**ruitful relationship with our partners

**F**inancially rewarding investment for our shareholders

## iSERVE

**Domestic • International • Land Transport • Cold Chain • Customs Brokerage**  
**ISO Tank • Project Cargo • Warehousing • Contract Logistics**

**SUPPLY CHAIN (02) 328 2332 • BUSINESS SOLUTIONS (02) 826 0590**

**VALUE CHAIN (02) 553 5632 • F2 GLOBAL (02) 826 3216**

**[www.f2logistics.com](http://www.f2logistics.com)**