



**F2 LOGISTICS**  
LET'S MOVE. NOW.

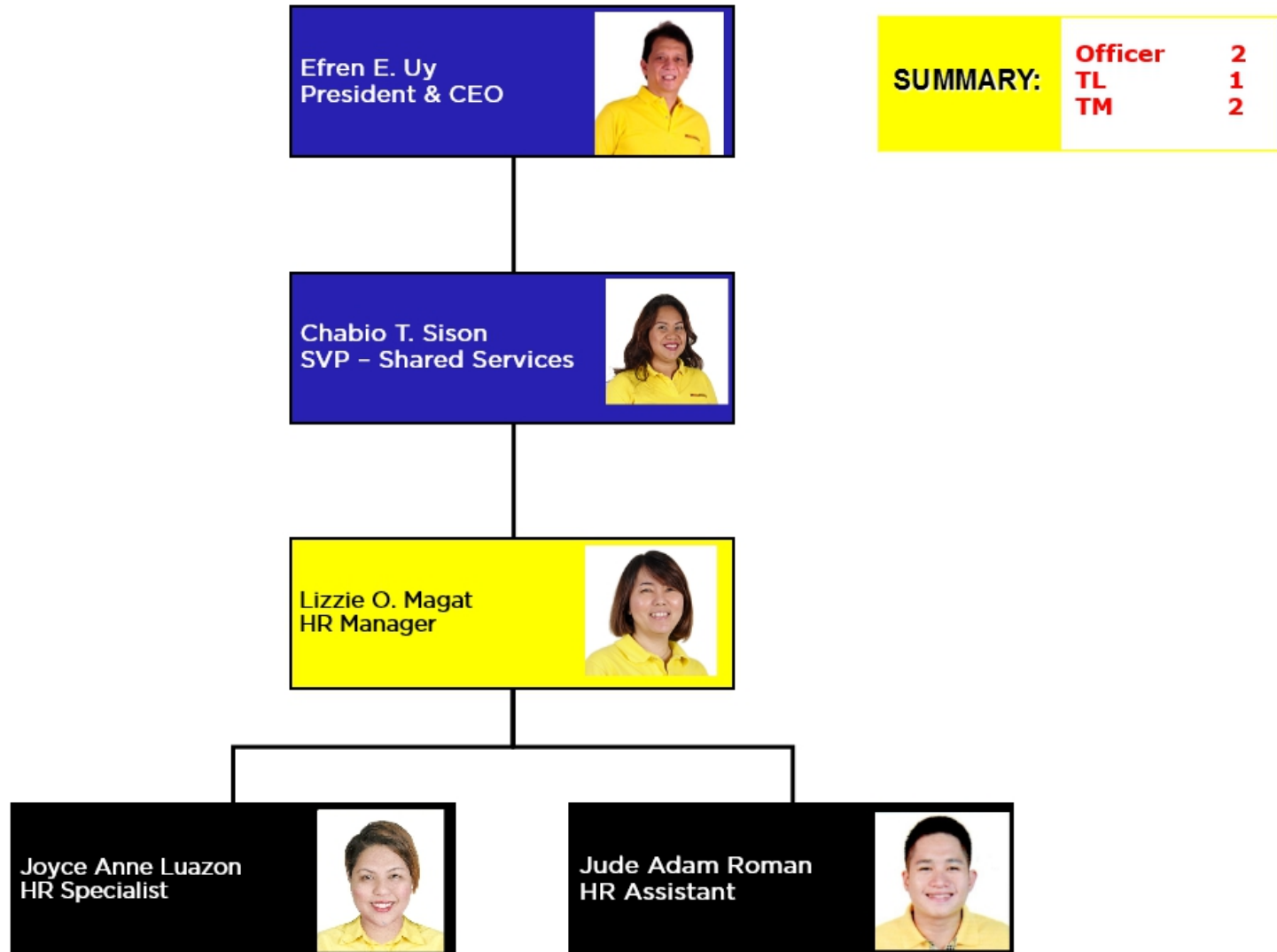
**10**  
F2 LOGISTICS  
YEARS



**iSERVE**

# Shared Services Organizational Chart 2016






**Efren E. Uy**  
President & CEO




**Chabio T. Sison**  
SVP  
Shared Services



**Reden Salita**  
Fleet Manager



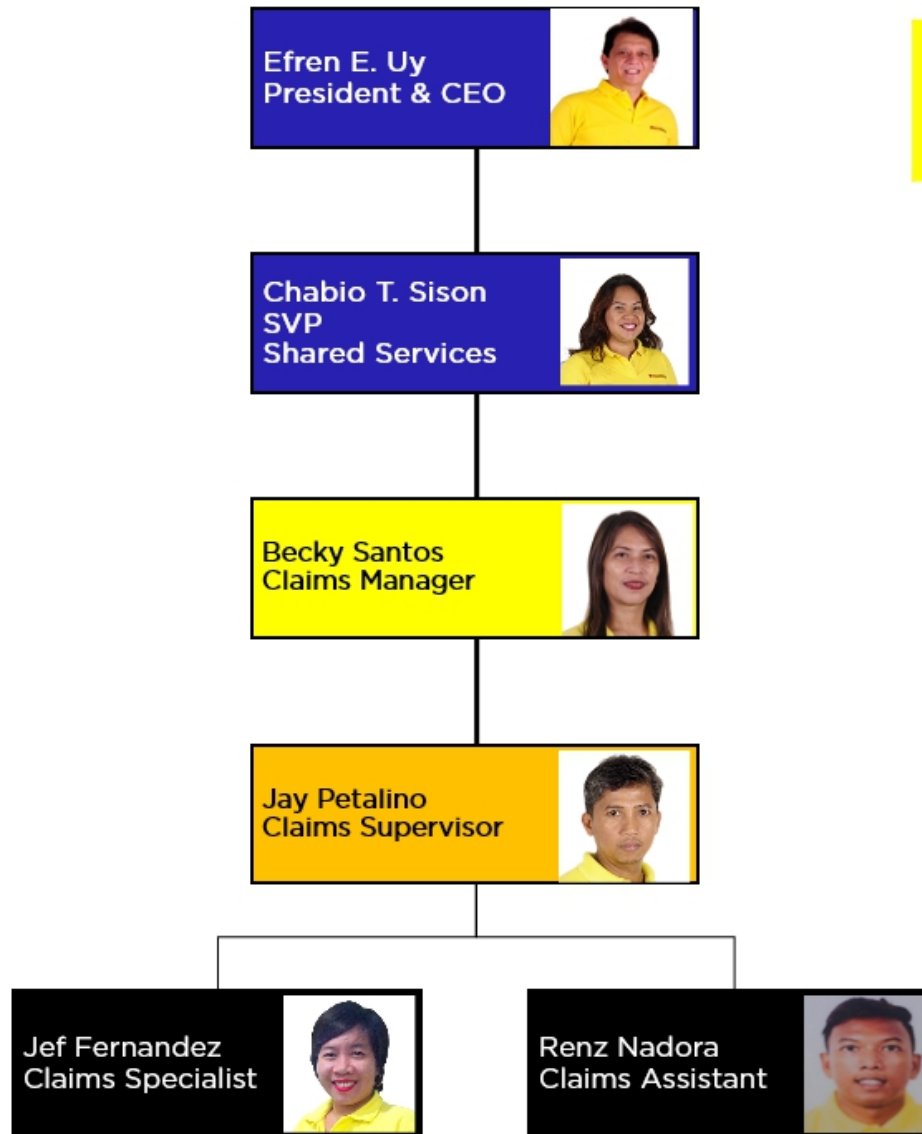
**Jhun Macapaz**  
Fleet Supervisor



**Rowen Sumihilig**  
Fleet Assistant

<b>SUMMARY:</b>	<b>Officer</b>	<b>2</b>
	<b>TL</b>	<b>1</b>
	<b>UL</b>	<b>1</b>
	<b>SubCon</b>	<b>1</b>



**SUMMARY:**

<b>Officer</b>	<b>3</b>
<b>TL</b>	<b>1</b>
<b>UL</b>	<b>1</b>
<b>TM</b>	<b>2</b>

Efren E. Uy  
President & CEO



**SUMMARY:**

<b>Officer</b>	<b>2</b>
<b>TL</b>	<b>1</b>
<b>TM</b>	<b>3</b>

Chabio T. Sison  
SVP – Shared Services



Mylene Collado  
Projects/QAD  
Manager



Anjella Bernardo  
Technical Specialist

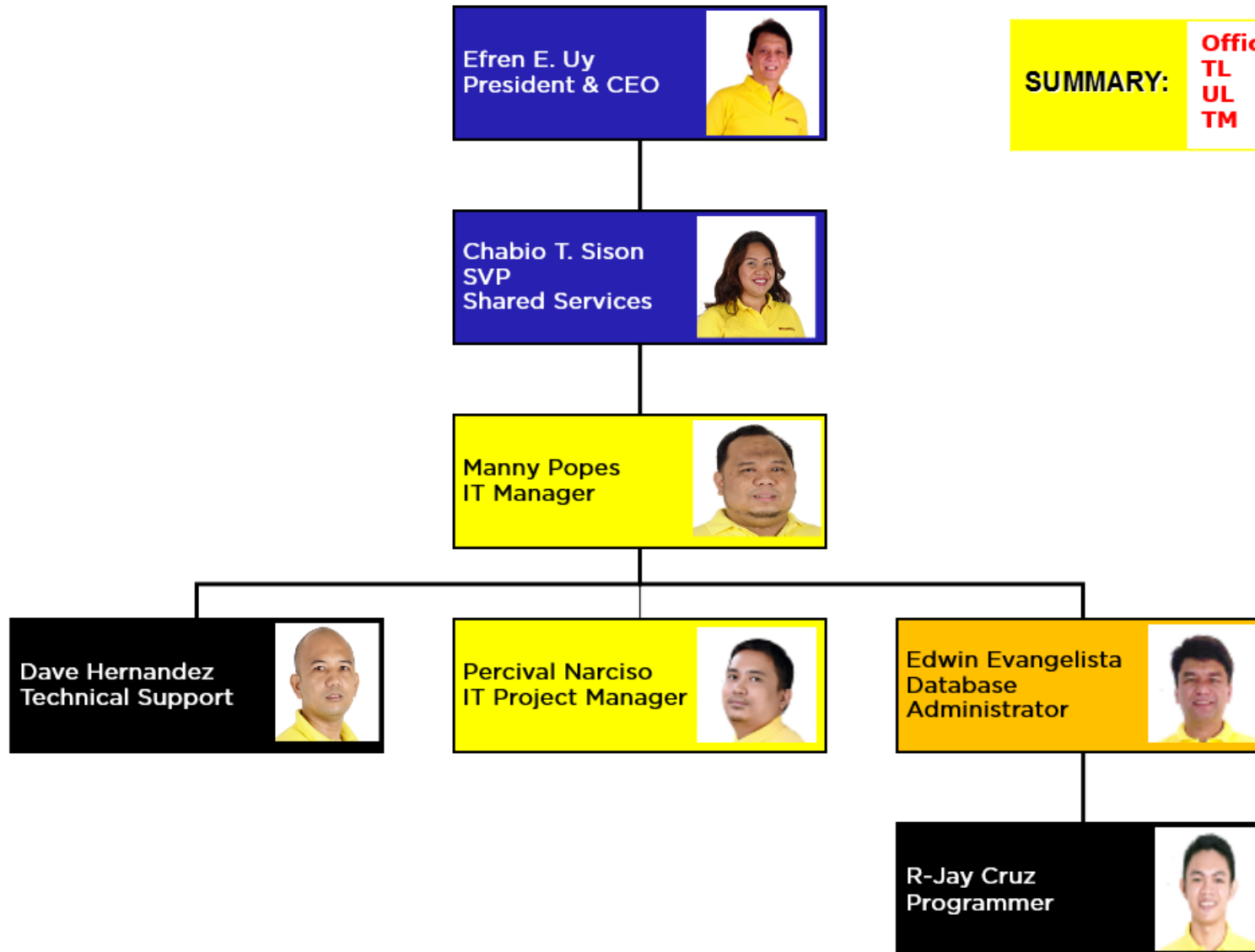


Maricris Perlas  
QA Analyst



Mary Jane Chua  
Process Specialist





<b>SUMMARY:</b>	<b>Officer</b>	<b>2</b>
	<b>TL</b>	<b>2</b>
	<b>UL</b>	<b>1</b>
	<b>TM</b>	<b>2</b>



**Efren E. Uy**  
President & CEO




<b>SUMMARY:</b>	<b>Officer</b>	<b>2</b>
	<b>TL</b>	<b>1</b>
	<b>TM</b>	<b>2</b>

**Chabio T. Sison**  
SVP – Shared Services



**Marvin Gonzales**  
MMD Manager



**Joefel De Martin**  
MMD Coordinator



**Mark Lester Din**  
Buyer






Efren E. Uy  
President & CEO




<b>SUMMARY:</b>	<b>Officer</b>	<b>2</b>
	<b>TL</b>	<b>1</b>
	<b>TM</b>	<b>2</b>


Chabio T. Sison  
SVP – Shared Services



Danielle Lucas  
Marketing Manager

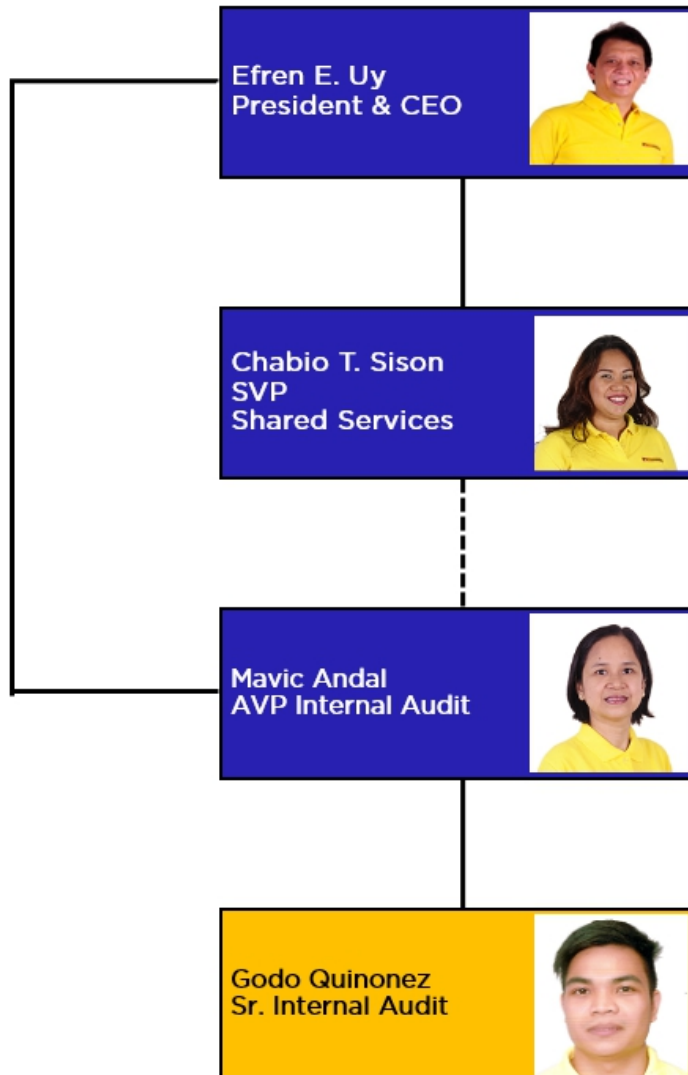


Erika Uy  
Marketing Executive



Ayen Venida  
Marketing Executive





## SUMMARY:

Officer	3
TL	0
UL	1





**F2 LOGISTICS**  
LET'S MOVE. NOW.

## VISION

We will be the **partner of choice**  
for **world class** supply chain solutions

## OUR MISSION

We exist to **provide**

**F**lexible, customized supply chain solutions

**F**un-filled and excellence - driven work environment for our team members

**F**ruitful relationship with our partners

**F**inancially rewarding investment for our shareholders

## iSERVE

**Domestic • International • Land Transport • Cold Chain • Customs Brokerage**  
**ISO Tank • Project Cargo • Warehousing • Contract Logistics**

**SUPPLY CHAIN (02) 328 2332 • BUSINESS SOLUTIONS (02) 826 0590**

**VALUE CHAIN (02) 553 5632 • F2 GLOBAL (02) 826 3216**

**[www.f2logistics.com](http://www.f2logistics.com)**