



**F2 LOGISTICS**  
LET'S MOVE. NOW.

**10**  
F2 LOGISTICS  
YEARS



**iSERVE**

# **SUPPLY CHAIN**

## **Org Chart**

### **as April 30, 2017**



**As of April 30, 2017**

<b>Summary</b>	Officer	1
	MGR	2
	SUP	4
	TM	1
	<b>TOTAL</b>	<b>8</b>

**ELISA M. CUNANAN**  
AVP SALES



**MAOUI STEVENS**  
SALES MANAGER



**MAE MERZA**  
ACCOUNT EXECUTIVE



**MARK CORREA**  
ACCOUNT EXECUTIVE



**CYBEL SACLAG**  
ACCOUNT EXECUTIVE



**CARMELA GAYTANO**  
ACCOUNT EXECUTIVE



**LEVIS GIMENO**  
SALES MANAGER

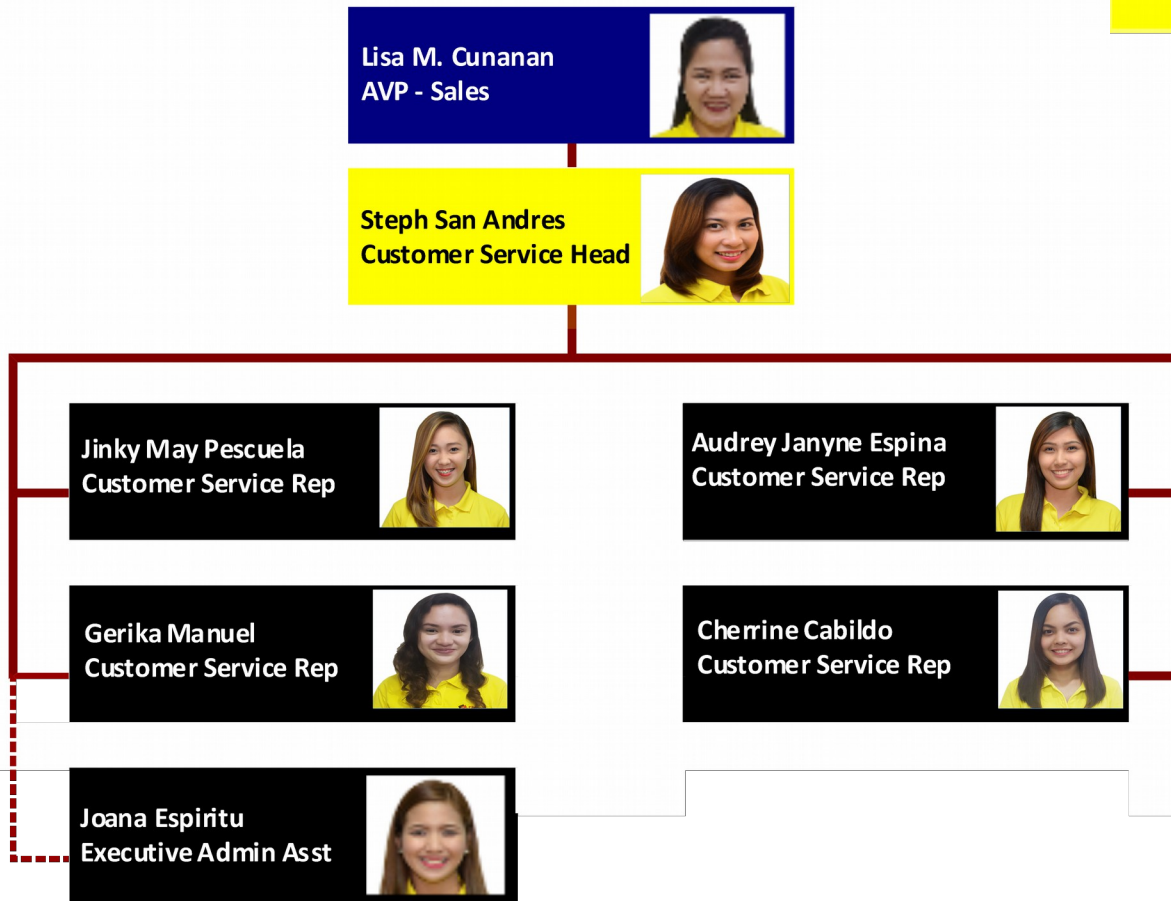


**ELISEO DELOS REYES**  
OUTLET CUSTOMER  
SERVICE REPRESENTATIVE



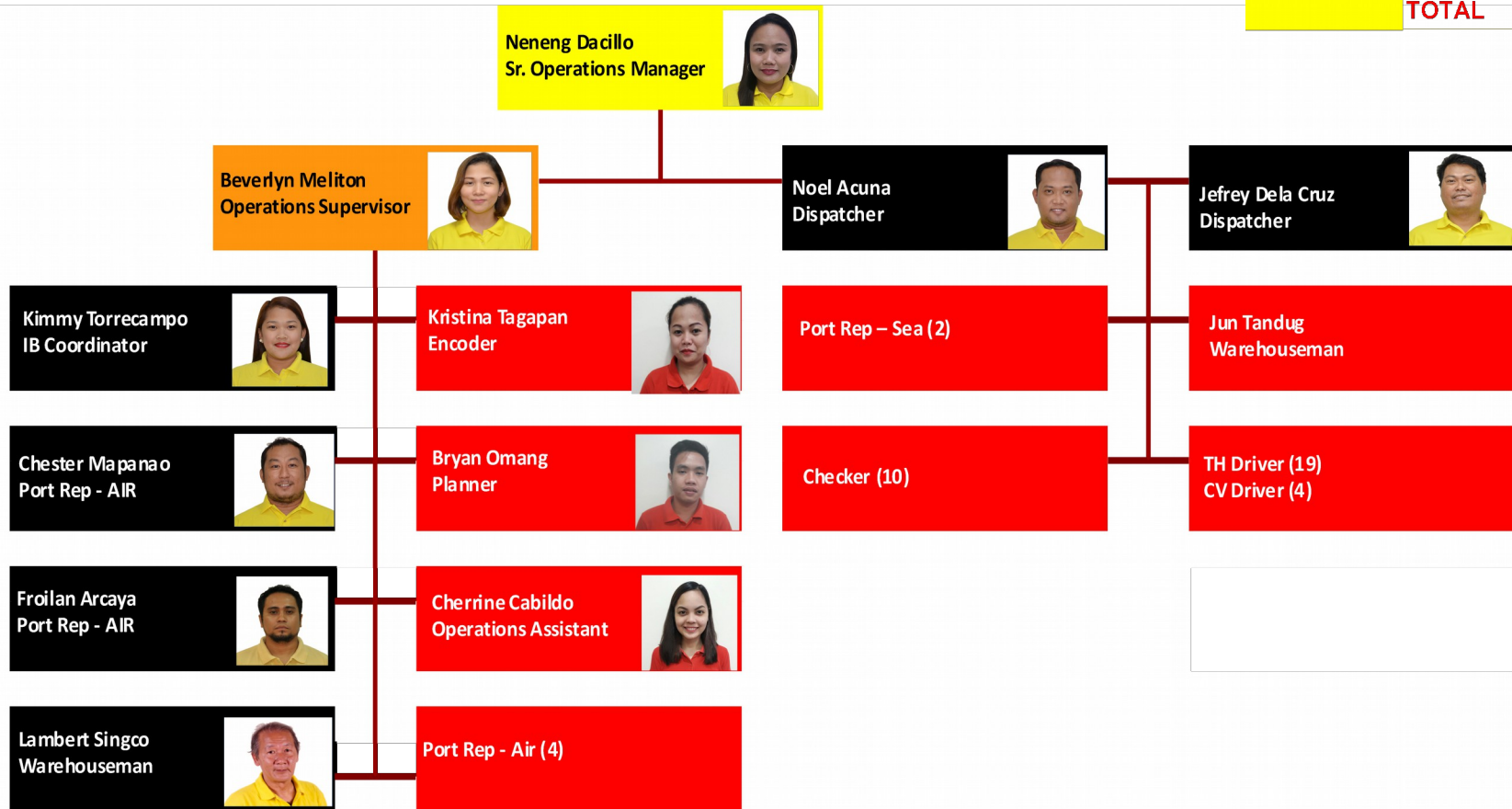
**As of April 30, 2017**

<b>Summary</b>	<b>Officer</b>	<b>1</b>
	<b>MGR</b>	<b>1</b>
	<b>TM</b>	<b>5</b>
	<b>TOTAL</b>	<b>7</b>

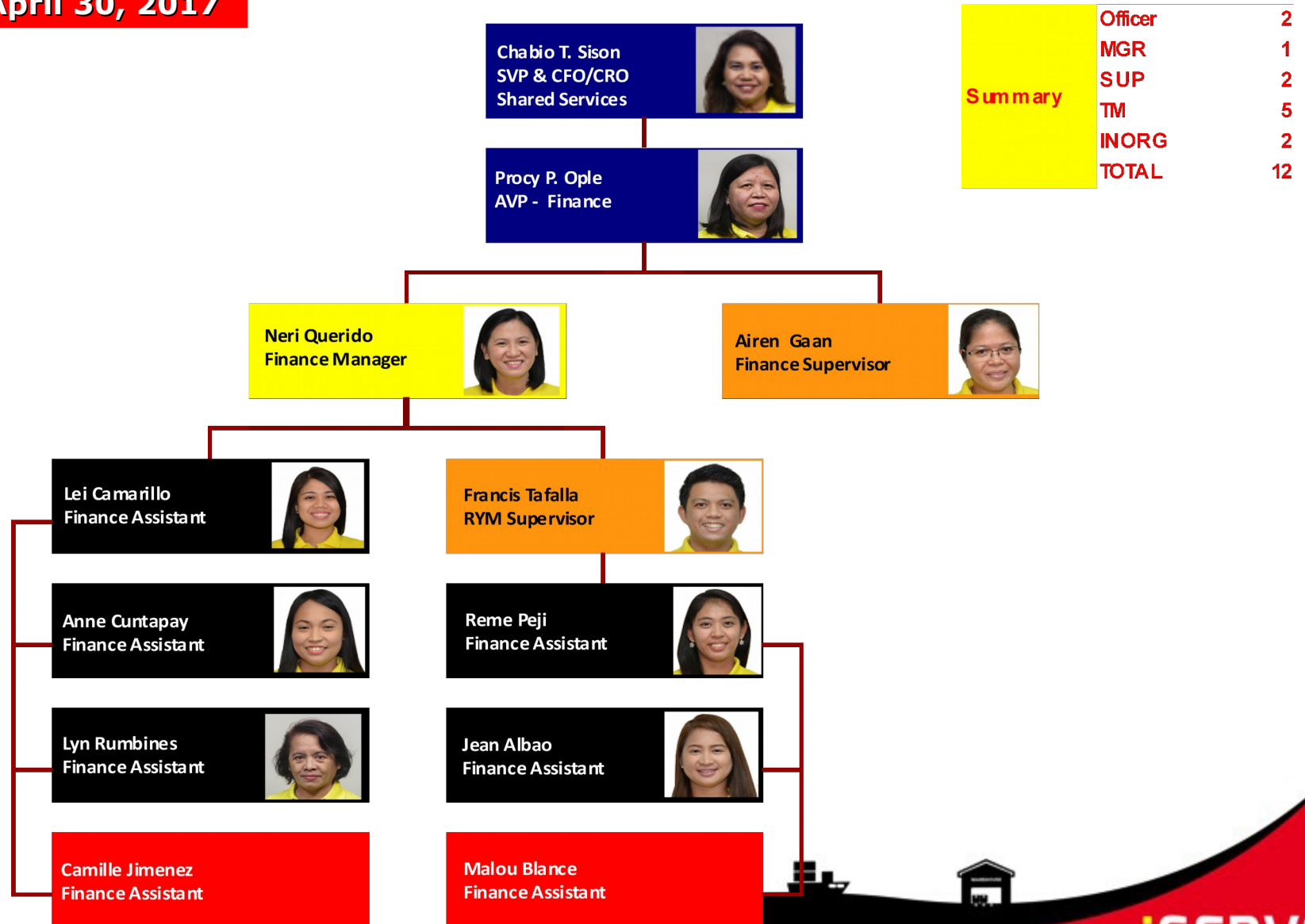


**As of April 30, 2017**

Summary	MGR	1
	SUP	1
	TM	6
	INORG	43
	<b>TOTAL</b>	<b>51</b>

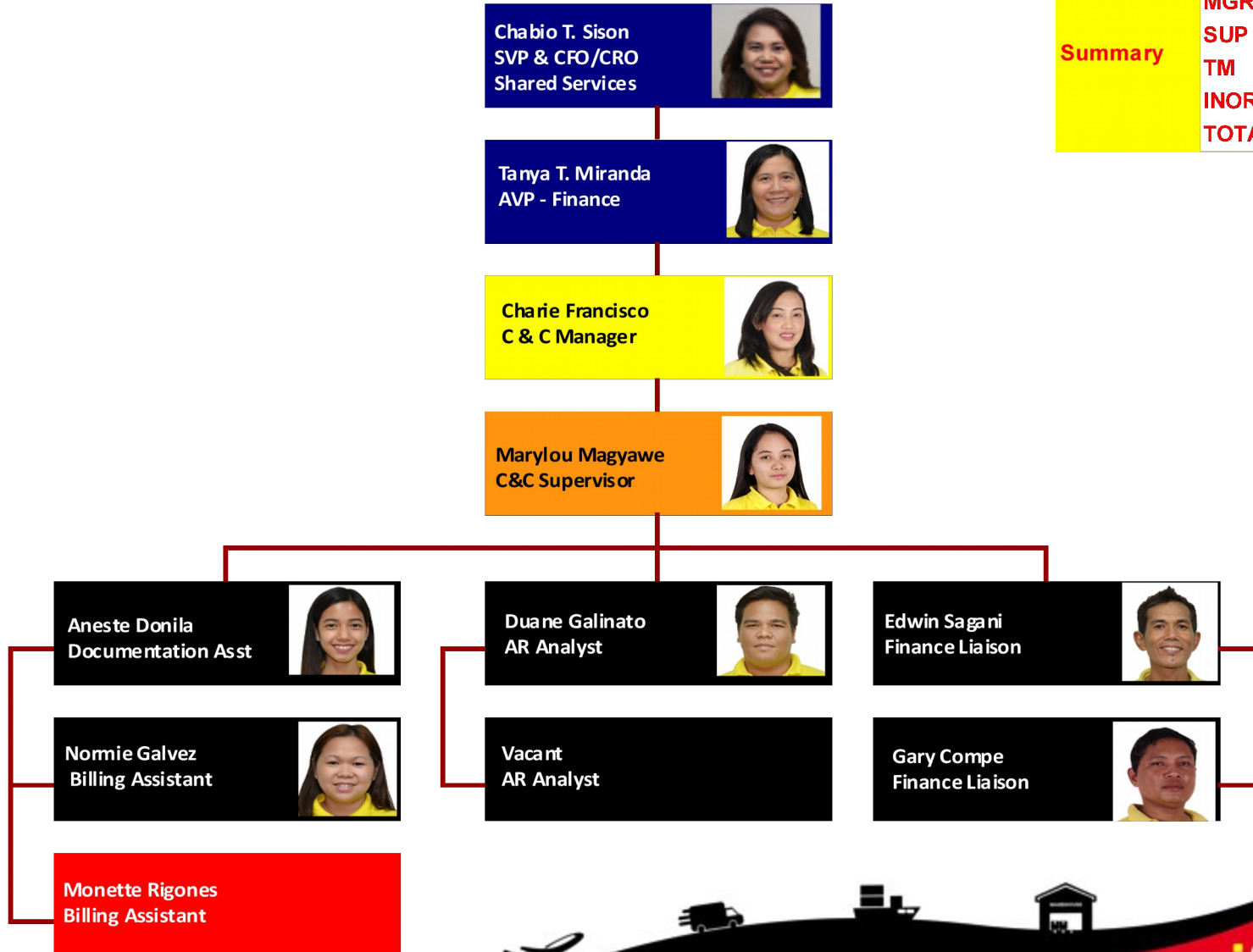


**As of April 30, 2017**





**As of April 30, 2017**



## Summary

Officer	2
MGR	1
SUP	1
TM	6
INORG	1
<b>TOTAL</b>	<b>11</b>





**F2 LOGISTICS**  
LET'S MOVE. NOW.

## VISION

We will be the **partner of choice**  
for **world class** supply chain solutions

## OUR MISSION

We exist to **provide**

**F**lexible, customized supply chain solutions

**F**un-filled and excellence - driven work environment for our team members

**F**ruitful relationship with our partners

**F**inancially rewarding investment for our shareholders

## iSERVE

**Domestic • International • Land Transport • Cold Chain • Customs Brokerage  
ISO Tank • Project Cargo • Warehousing • Contract Logistics**

**SUPPLY CHAIN (02) 328 2332 • BUSINESS SOLUTIONS (02) 826 0590**

**VALUE CHAIN (02) 553 5632 • F2 GLOBAL (02) 826 3216**

**[www.f2logistics.com](http://www.f2logistics.com)**