



F2 LOGISTICS
LET'S MOVE. NOW.

10
F2 LOGISTICS
YEARS



iSERVE

SUPPLY CHAIN

Org Chart

as June 30, 2018



As of June 30, 2018

Summary	Officer	1
	Manager	4
	Supervisor	2
	TOTAL	7



As of June 30, 2018

Lisa M. Cunanan
 AVP - Sales



Summary

Officer	1
MGR	1
TM	6
TOTAL	8

Steph San Andres
 Customer Service
 Head



Jinky May Pescuela
 Customer Service Rep



Angela Santos
 Customer Service Rep



Aleanna Lee Ramos
 Customer Service Rep



Marirose Medina
 Customer Service Rep



Cherrine Cabildo
 Customer Service Rep



Marian Denisse Cruz
 Customer Service Rep

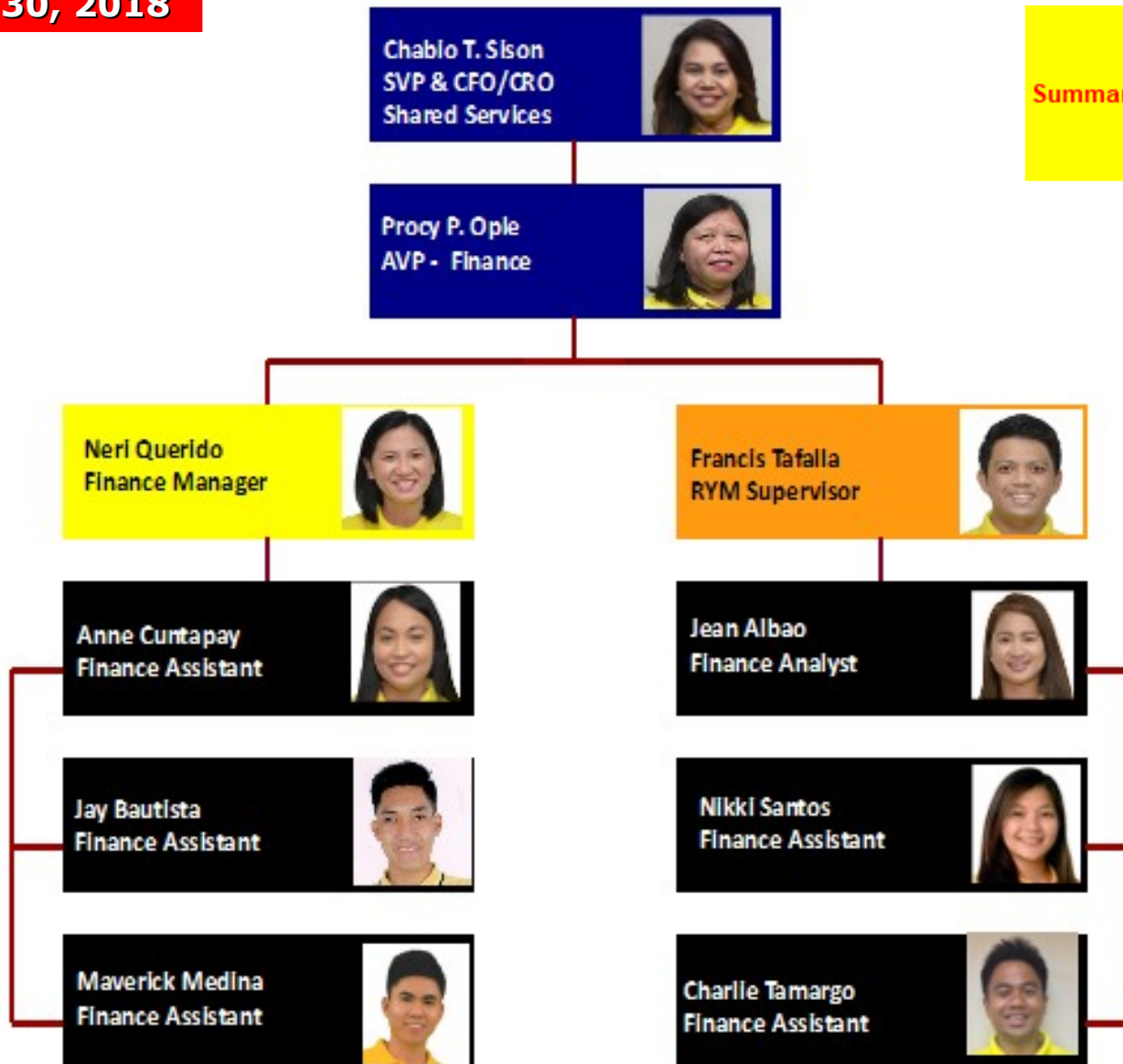


As of June 30, 2018

Summary	MGR	1
	SUP	1
	TM	4
	INORG	50
	TOTAL	56

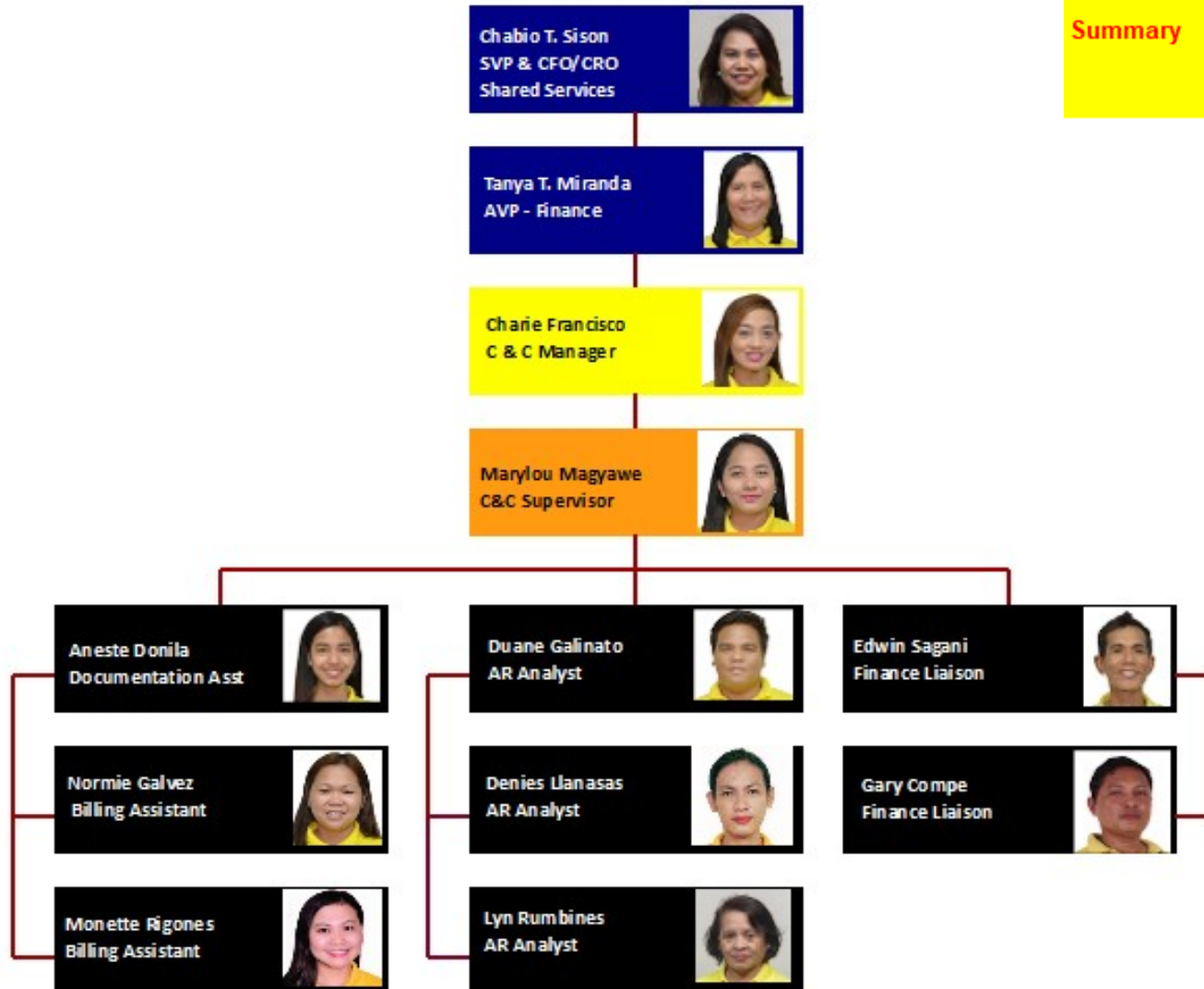


As of June 30, 2018



Summary	Officer	2
	MGR	1
	SUP	1
	TM	6
	TOTAL	10

As of June 30, 2018



Summary

Officer	2
MGR	1
SUP	1
TM	8
TOTAL	12



F2 LOGISTICS
LET'S MOVE. NOW.

VISION

We will be the **partner of choice**
for **world class** supply chain solutions

OUR MISSION

We exist to **provide**

Flexible, customized supply chain solutions

Fun-filled and excellence - driven work environment for our team members

Fruitful relationship with our partners

Financially rewarding investment for our shareholders

iSERVE

Domestic • International • Land Transport • Cold Chain • Customs Brokerage
ISO Tank • Project Cargo • Warehousing • Contract Logistics

SUPPLY CHAIN (02) 328 2332 • BUSINESS SOLUTIONS (02) 826 0590

VALUE CHAIN (02) 553 5632 • F2 GLOBAL (02) 826 3216

www.f2logistics.com