



F2 LOGISTICS
LET'S MOVE. NOW.

10
F2 LOGISTICS
YEARS



iSERVE

SUPPLY CHAIN

Org Chart

as May 31, 2017



As of May 31, 2017

ELISA M. CUNANAN
 AVP SALES



Summary

Officer	1
MGR	2
SUP	4
TM	1
TOTAL	8

MAOUI STEVENS
 SALES MANAGER



LEVIS GIMENO
 SALES MANAGER



MAE MERZA
 ACCOUNT EXECUTIVE



ELISEO DELOS REYES
 OUTLET CUSTOMER
 SERVICE REPRESENTATIVE



MARK CORREA
 ACCOUNT EXECUTIVE



CYBEL SACLAG
 ACCOUNT EXECUTIVE



CARMELA GAYTANO
 ACCOUNT EXECUTIVE



As of May 31, 2017

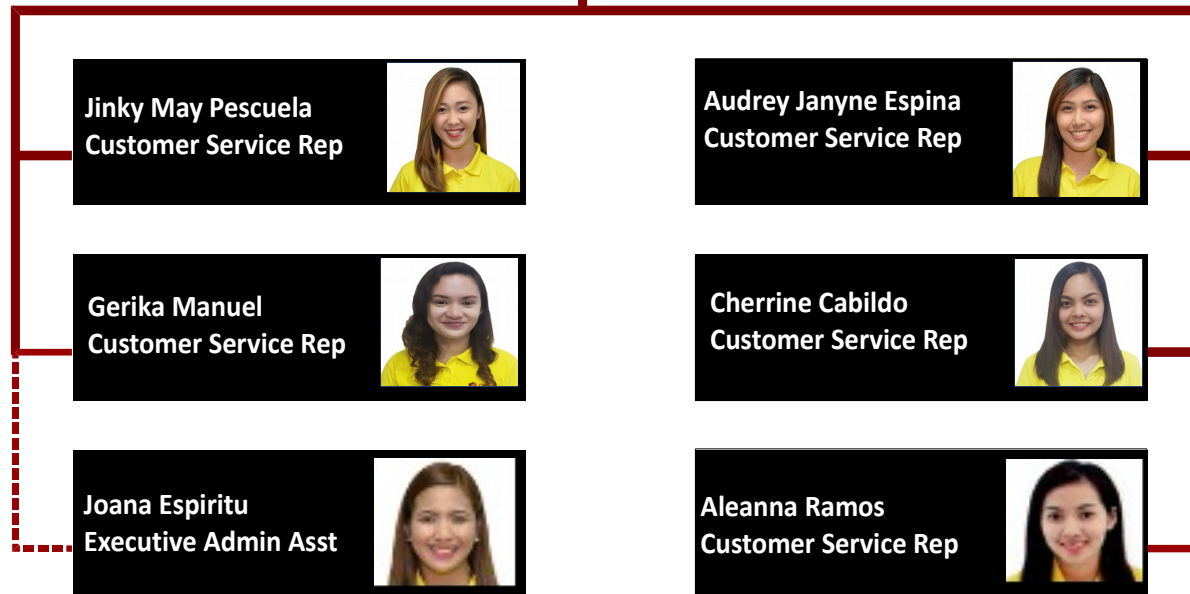
Lisa M. Cunanan
AVP - Sales



Steph San Andres
Customer Service Head

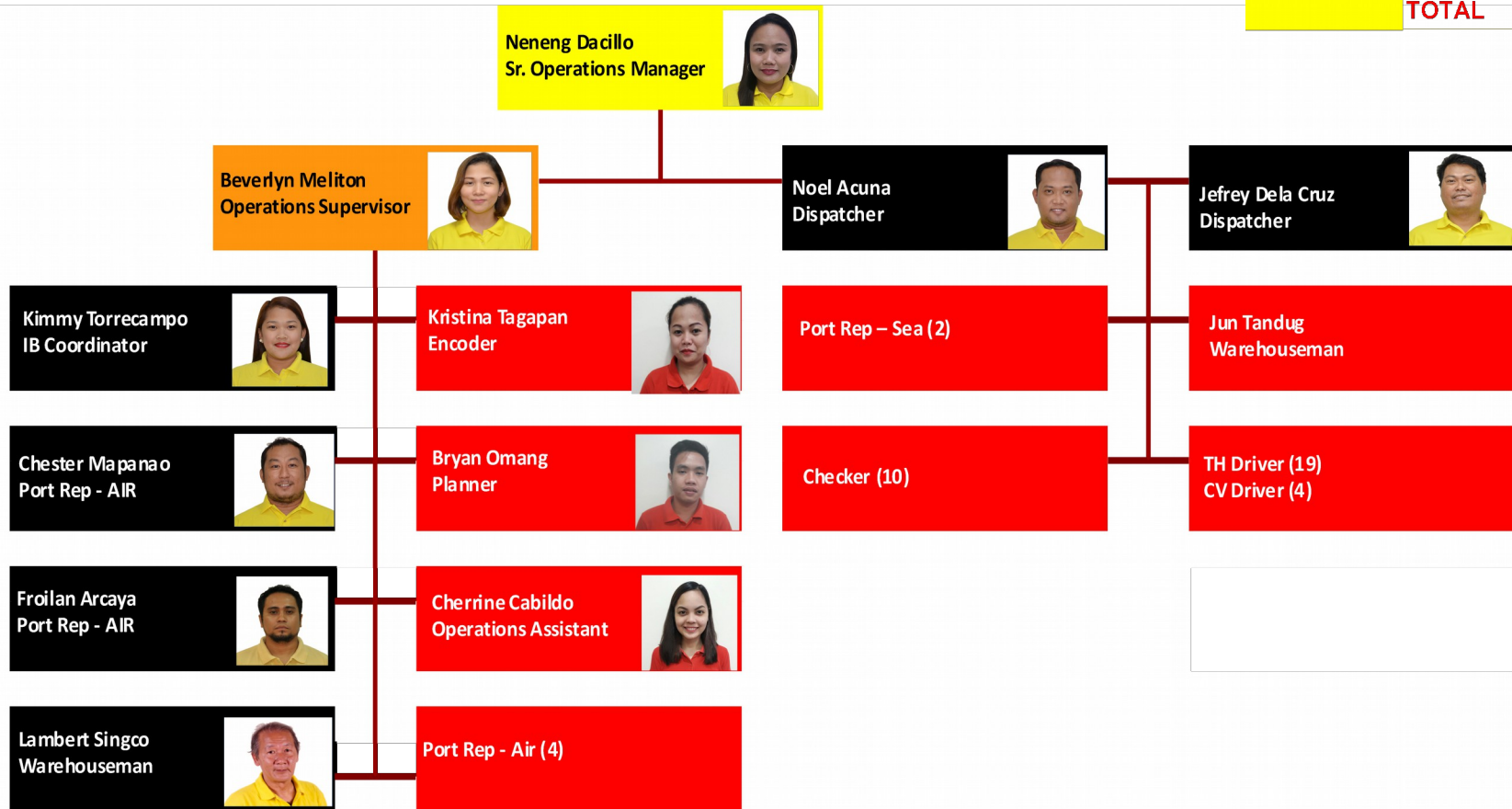


Summary	Officer	1
	MGR	1
	TM	6
	TOTAL	8

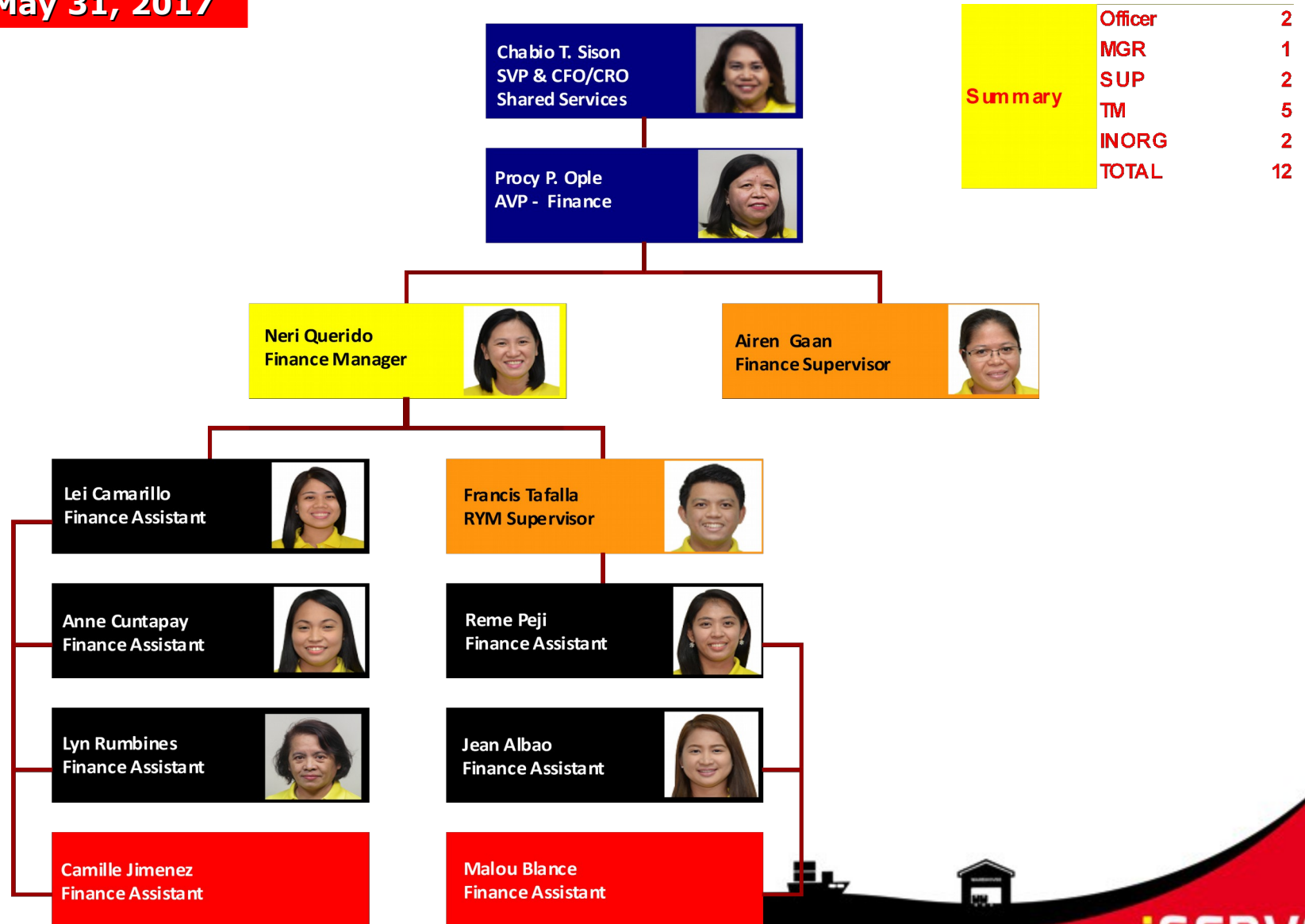


As of May 31, 2017

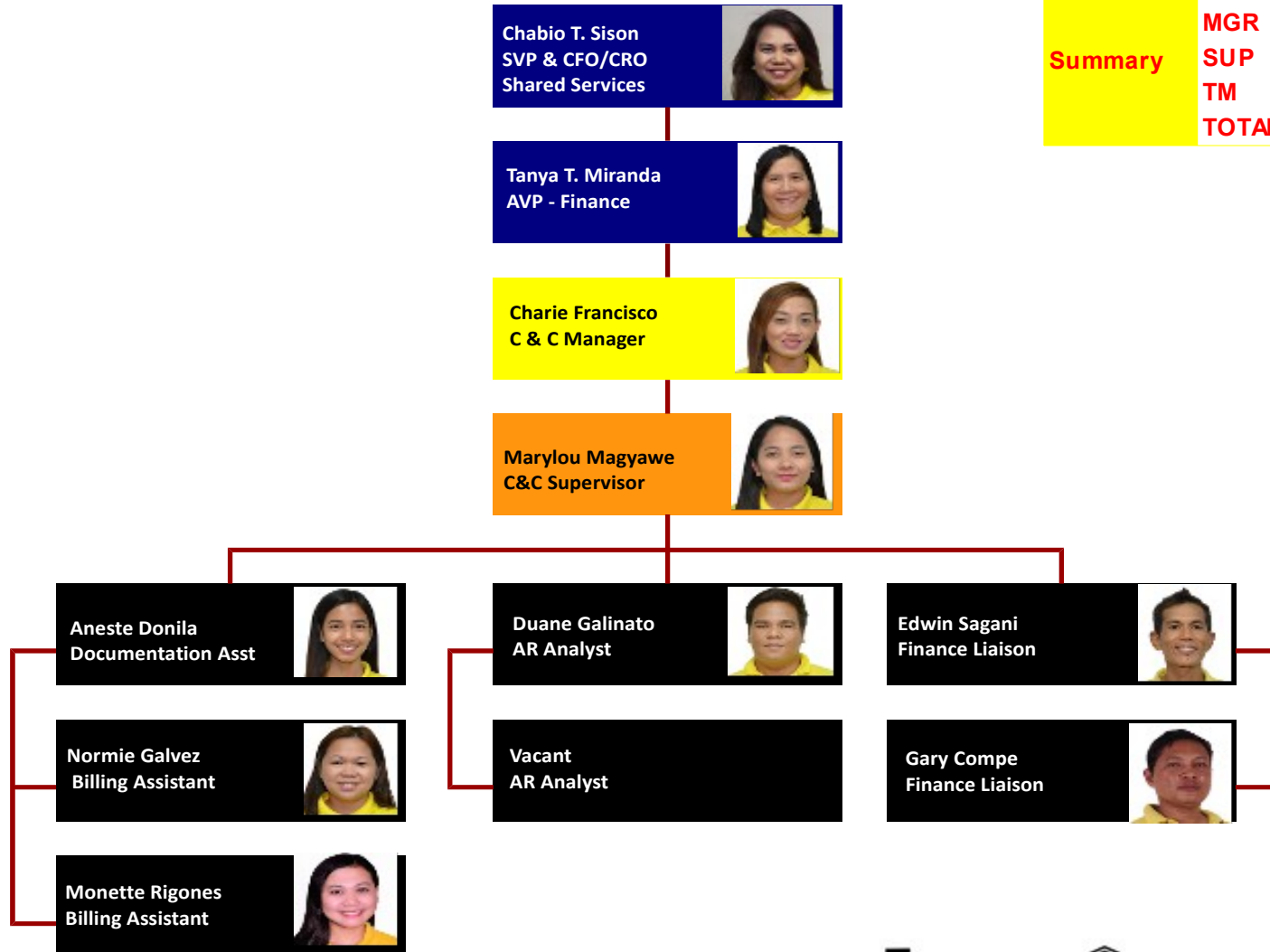
Summary	MGR	1
	SUP	1
	TM	6
	INORG	43
	TOTAL	51



As of May 31, 2017



As of May 31, 2017



Summary	Officer	2
	MGR	1
	SUP	1
	TM	7
	TOTAL	11





F2 LOGISTICS
LET'S MOVE. NOW.

VISION

We will be the **partner of choice**
for **world class** supply chain solutions

OUR MISSION

We exist to **provide**

Flexible, customized supply chain solutions

Fun-filled and excellence - driven work environment for our team members

Fruitful relationship with our partners

Financially rewarding investment for our shareholders

iSERVE

**Domestic • International • Land Transport • Cold Chain • Customs Brokerage
ISO Tank • Project Cargo • Warehousing • Contract Logistics**

SUPPLY CHAIN (02) 328 2332 • BUSINESS SOLUTIONS (02) 826 0590

VALUE CHAIN (02) 553 5632 • F2 GLOBAL (02) 826 3216

www.f2logistics.com