



**F2 LOGISTICS**  
LET'S MOVE. NOW.

**10**  
F2 LOGISTICS  
YEARS



**iSERVE**

# VALUE CHAIN

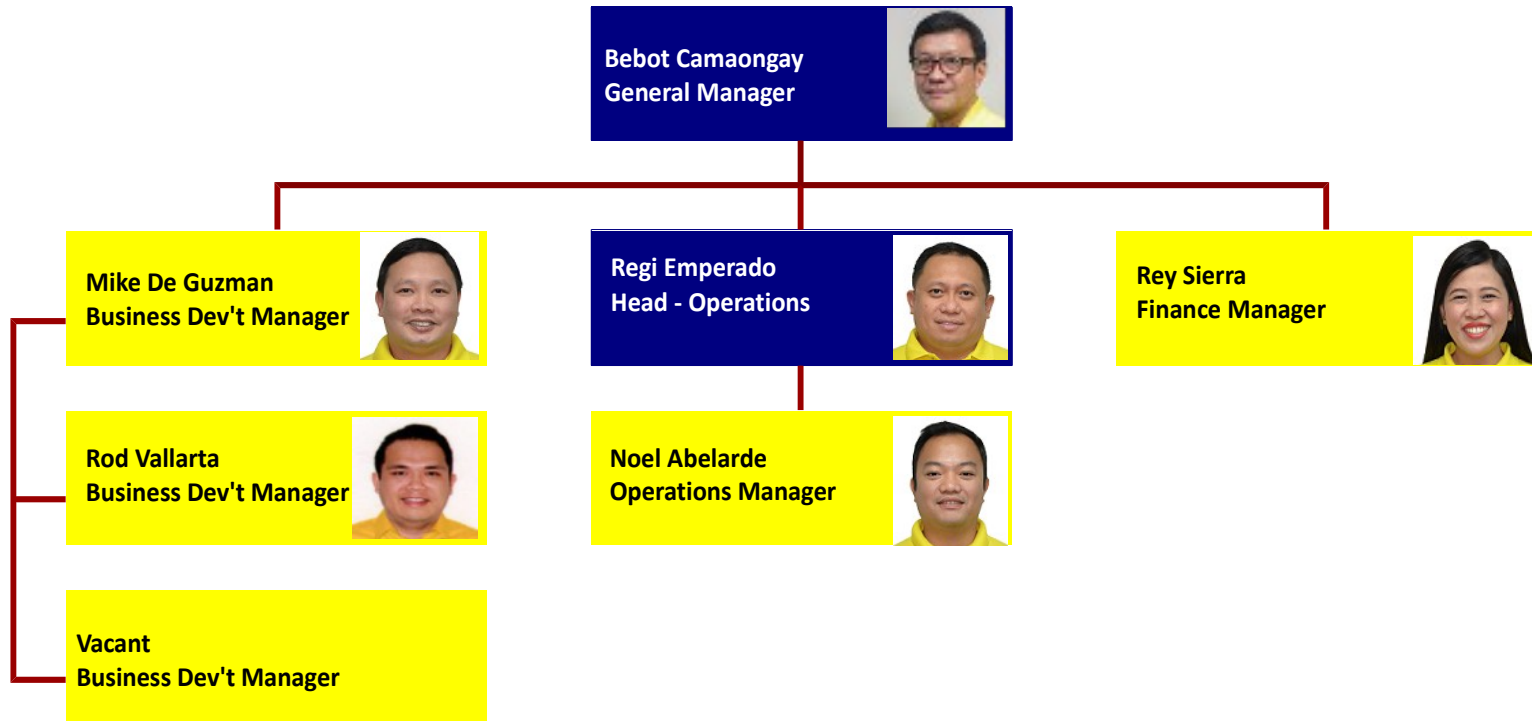
## Org Chart

### as April 30, 2017



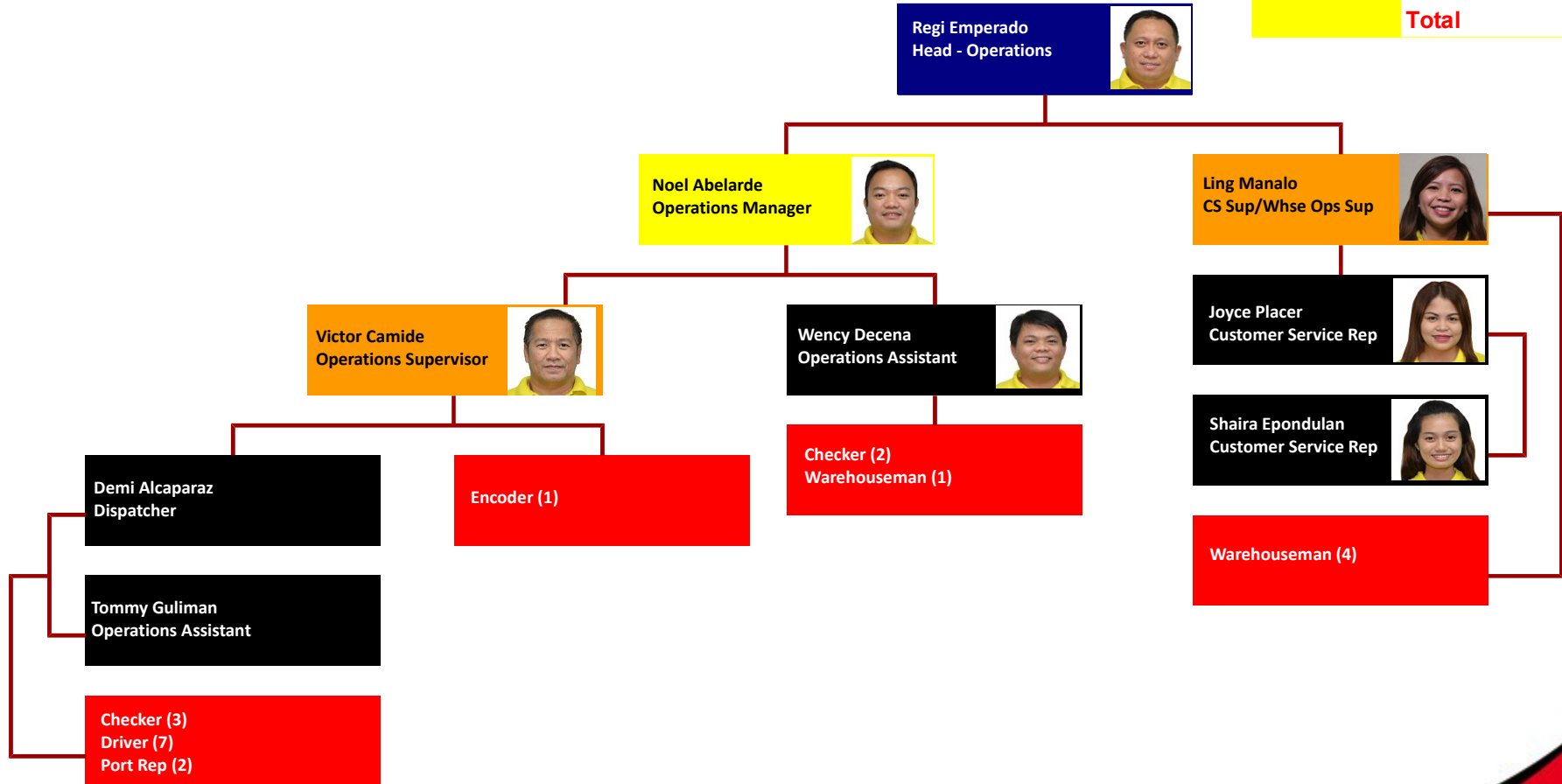
**As of April 30, 2017**

<b>Summary</b>	Officer	2
	MGR	5
	Total	7



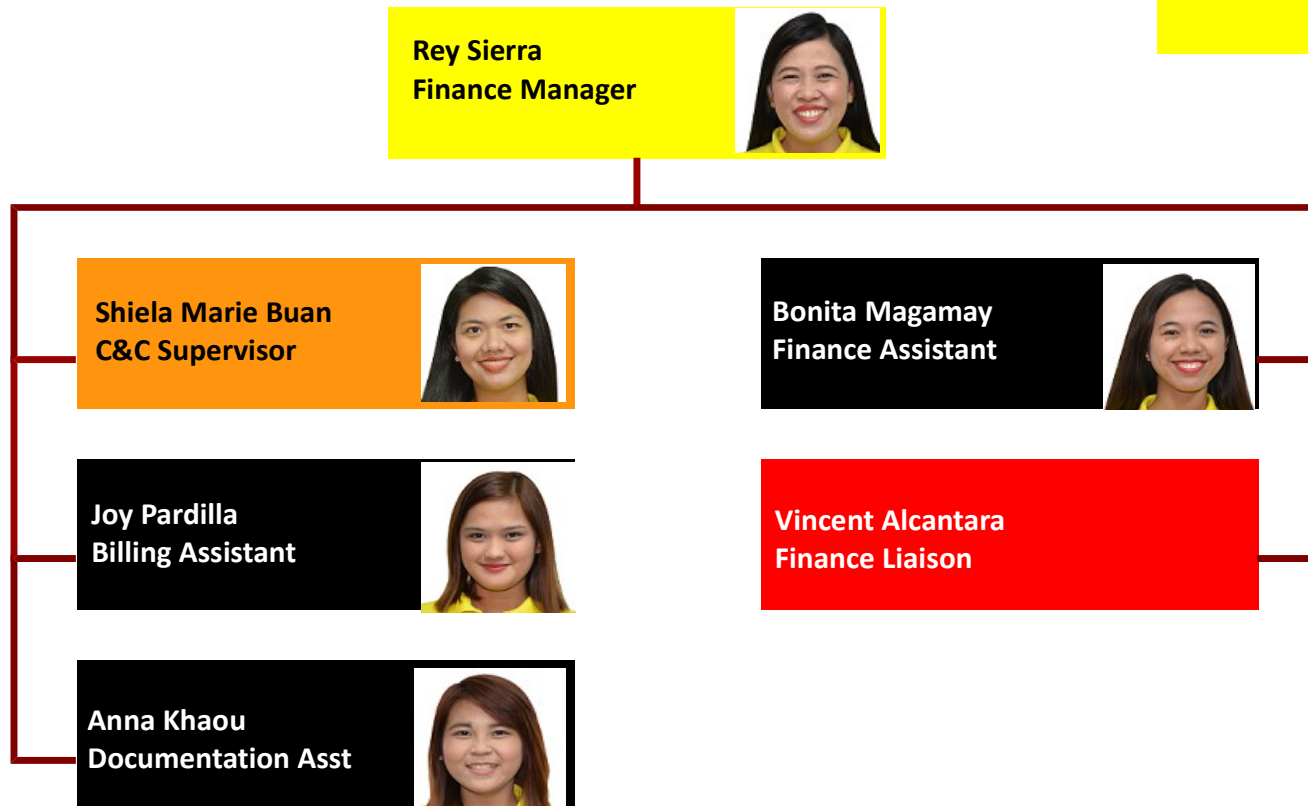
**As of April 30, 2017**

<b>Summary</b>	Officer	1
	MGR	1
	SUP	2
	TM	5
	INORG	20
	<b>Total</b>	<b>29</b>



**As of April 30, 2017**

<b>Summary</b>	<b>MGR</b>	<b>1</b>
	<b>SUP</b>	<b>1</b>
	<b>TM</b>	<b>3</b>
	<b>Inorg</b>	<b>1</b>
	<b>Summary</b>	<b>6</b>





**F2 LOGISTICS**  
LET'S MOVE. NOW.

## VISION

We will be the **partner of choice**  
for **world class** supply chain solutions

## OUR MISSION

We exist to **provide**

**F**lexible, customized supply chain solutions

**F**un-filled and excellence - driven work environment for our team members

**F**ruitful relationship with our partners

**F**inancially rewarding investment for our shareholders

## iSERVE

**Domestic • International • Land Transport • Cold Chain • Customs Brokerage**  
**ISO Tank • Project Cargo • Warehousing • Contract Logistics**

**SUPPLY CHAIN (02) 328 2332 • BUSINESS SOLUTIONS (02) 826 0590**

**VALUE CHAIN (02) 553 5632 • F2 GLOBAL (02) 826 3216**

**[www.f2logistics.com](http://www.f2logistics.com)**