



F2 LOGISTICS
LET'S MOVE. NOW.

10
F2 LOGISTICS
YEARS



iSERVE

VALUE CHAIN

Org Chart

as June 30, 2018



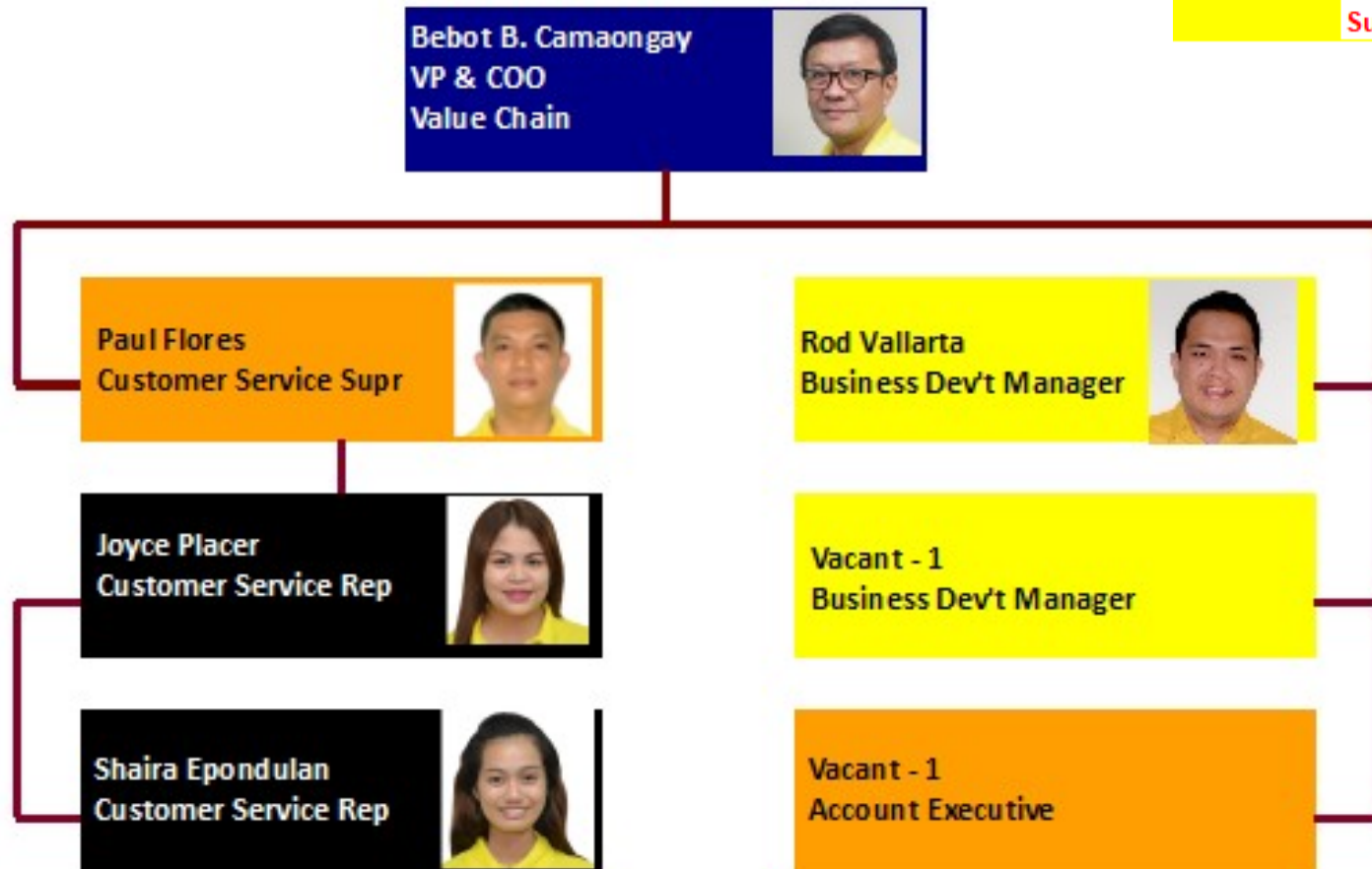
As of June 30, 2018

Summary	OFFICER	2
	MGR	4
	SUPR	1
	Summary	6

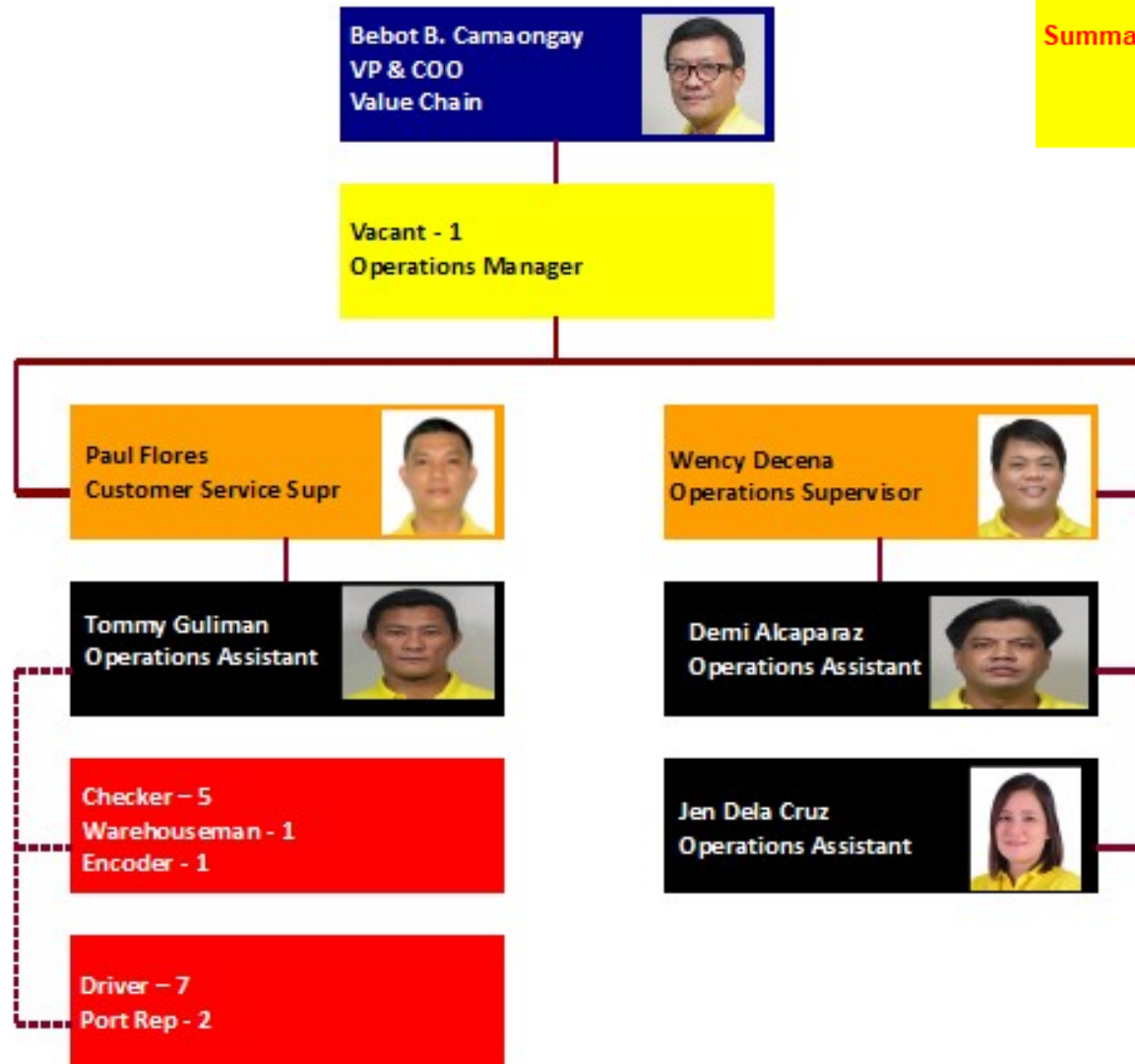


As of June 30, 2018

Summary	OFFICER	1
	MGR	2
	SUPR	2
	STAFF	2
	Summary	7



As of June 30, 2018



Summary

OFFICER	1
MGR	2
SUPR	2
STAFF	3
INORG	16
Summary	24

As of June 30, 2018

Summary	MGR	1
	SUPR	2
	STAFF	2
	Summary	5

Rey Sierra
Finance Manager



Shiela Marie Buan
C&C Supervisor



Bonita Magamay
Finance Supervisor



Joy Pardilla
Billing Assistant



Anna Khaou
Documentation Assistant





F2 LOGISTICS
LET'S MOVE. NOW.

VISION

We will be the **partner of choice**
for **world class** supply chain solutions

OUR MISSION

We exist to **provide**

Flexible, customized supply chain solutions

Fun-filled and excellence - driven work environment for our team members

Fruitful relationship with our partners

Financially rewarding investment for our shareholders

iSERVE

Domestic • International • Land Transport • Cold Chain • Customs Brokerage
ISO Tank • Project Cargo • Warehousing • Contract Logistics

SUPPLY CHAIN (02) 328 2332 • BUSINESS SOLUTIONS (02) 826 0590

VALUE CHAIN (02) 553 5632 • F2 GLOBAL (02) 826 3216

www.f2logistics.com